



**UNIVERSAL<sup>®</sup>**  
SCHOOL UNIFORM

Quality you can trust since 1984



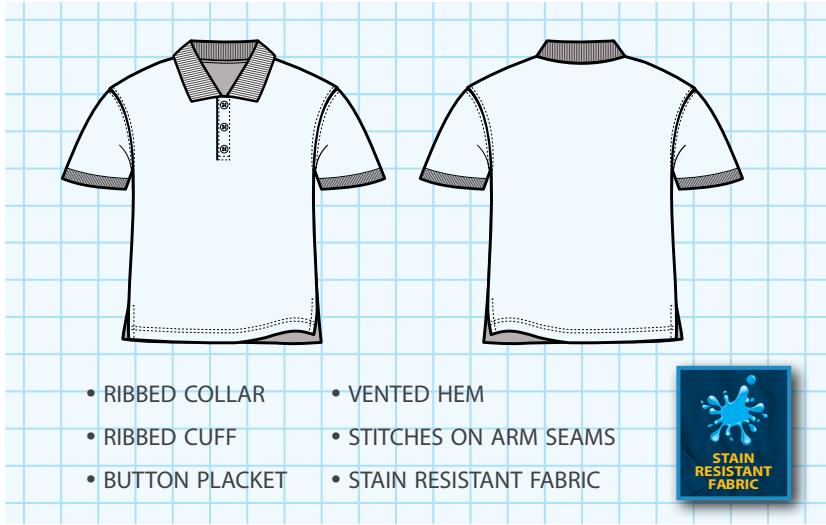
# Polos

Easy care and Easy wear.  
16 school colors.

Most demanded top seller.  
Stock up now !

# number one best selling polo

A best seller item! Detailed with rib knit collar, cuffs, and side vents.



- RIBBED COLLAR
- RIBBED CUFF
- BUTTON PLACKET
- VENTED HEM
- STITCHES ON ARM SEAMS
- STAIN RESISTANT FABRIC

SHORT SLEEVE  
**PIQUE POLO**  
WITH KNIT COLLAR AND  
**STAIN RELEASE FABRIC**

| U838 |       |           |          |      |          |          |       |          |
|------|-------|-----------|----------|------|----------|----------|-------|----------|
|      | White | Yellow    | Lt. Blue | Pink | H. Grey  | Gold     | Black | K. Green |
|      |       |           |          |      |          |          |       |          |
|      | Jade  | R. Purple | R. Blue  | Red  | H. Green | Burgundy | Navy  | Orange   |

|           |   |   |   |   |   |   |   |   |
|-----------|---|---|---|---|---|---|---|---|
| 2T - 4T   | • | • | • | • | • | • | • | • |
| 4 - 7     | • | • | • | • | • | • | • | • |
| 8 - 14    | • | • | • | • | • | • | • | • |
| 16 - 20   | • | • | • | • | • | • | • | • |
| S - 2XL   | • | • | • | • | • | • | • | • |
| 3XL - 5XL | • | • | • | • | • | • | • | • |

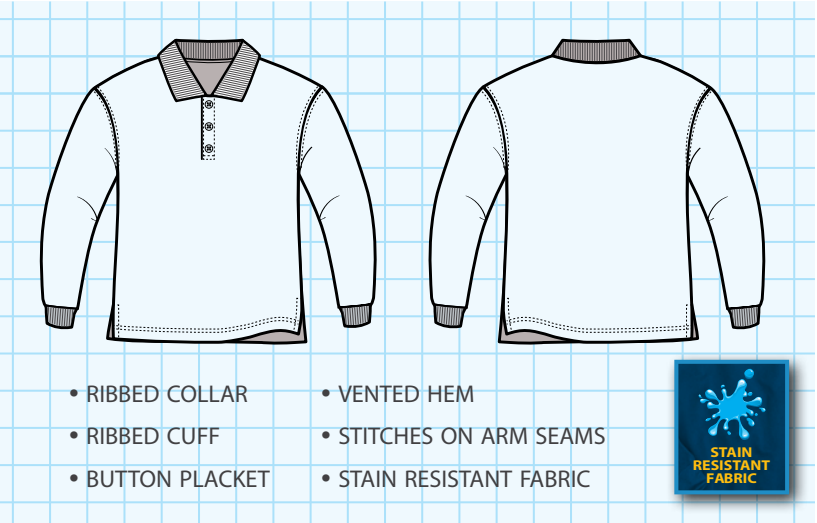
Cotton and Polyester blend fabric. Machine Washable.

Alpha Sizes : 4/YXS, 6/YS, 8/YM, 12/YL, 16/YXL



# another best selling polo

Another best selling item! Detailed with rib knit collar, cuffs, and side vents.



- RIBBED COLLAR
- RIBBED CUFF
- BUTTON PLACKET
- VENTED HEM
- STITCHES ON ARM SEAMS
- STAIN RESISTANT FABRIC

LONG SLEEVE  
**PIQUE POLO**  
WITH KNIT COLLAR AND  
**STAIN RELEASE FABRIC**

| U840 |           |         |          |          |          |       |          |
|------|-----------|---------|----------|----------|----------|-------|----------|
|      | White     | Yellow  | Lt. Blue | H. Grey  | Gold     | Black | K. Green |
|      |           |         |          |          |          |       |          |
|      | R. Purple | R. Blue | Red      | H. Green | Burgundy | Navy  | Orange   |

|           |   |   |   |   |   |   |   |
|-----------|---|---|---|---|---|---|---|
| 2T - 4T   | • | • | • | • | • | • | • |
| 4 - 7     | • | • | • | • | • | • | • |
| 8 - 14    | • | • | • | • | • | • | • |
| 16 - 20   | • | • | • | • | • | • | • |
| S - 2XL   | • | • | • | • | • | • | • |
| 3XL - 5XL | • | • | • | • | • | • | • |

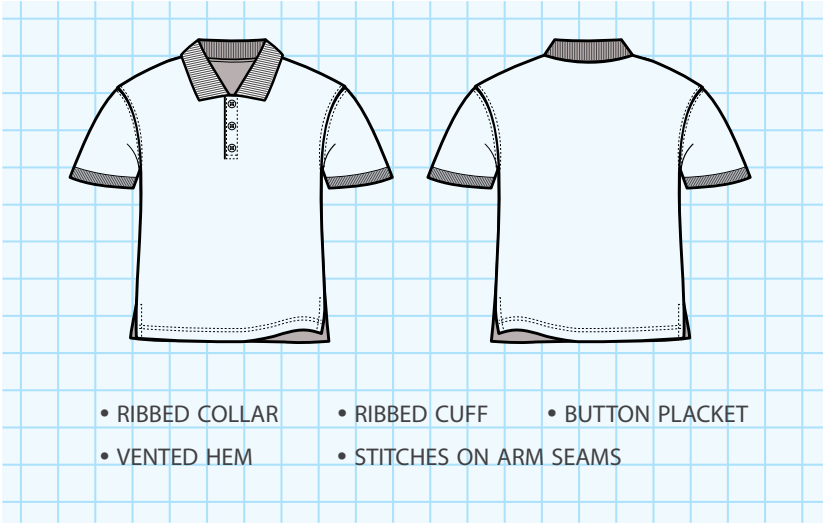
Cotton and Polyester blend fabric. Machine Washable.

Alpha Sizes : 4/YXS, 6/YS, 8/YM, 12/YL, 16/YXL



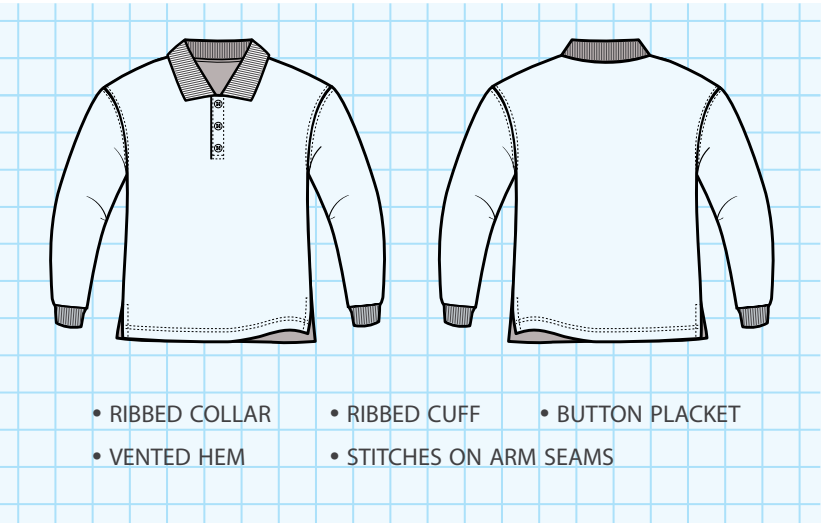
# softness you can feel

This short sleeve jersey polo features double layering knit fabric which makes it plush and soft to wear. Details include side vents and stitches on arm seams.



# comfortable jersey polo

Our long sleeve jersey polo is constructed from double layered interlock knit fabric which makes it softer than most polo shirts out in the market. Details include side vents and stitches on arm seams.



## SHORT SLEEVE INTERLOCK KNIT POLO

| U835*     | White | Yellow | Lt. Blue | Gold | Red | H. Green | Burgundy | Navy |
|-----------|-------|--------|----------|------|-----|----------|----------|------|
| 4 - 7     | •     | •      | •        | •    | •   | •        | •        | •    |
| 8 - 14    | •     | •      | •        | •    | •   | •        | •        | •    |
| 16 - 20   | •     | •      | •        | •    | •   | •        | •        | •    |
| S - 2XL   | •     | •      | •        | •    | •   | •        | •        | •    |
| 3XL - 5XL | •     |        | •        | •    | •   | •        | •        | •    |

Cotton and Polyester blend fabric. Machine Washable.

\* While supplies last.

## LONG SLEEVE INTERLOCK KNIT POLO

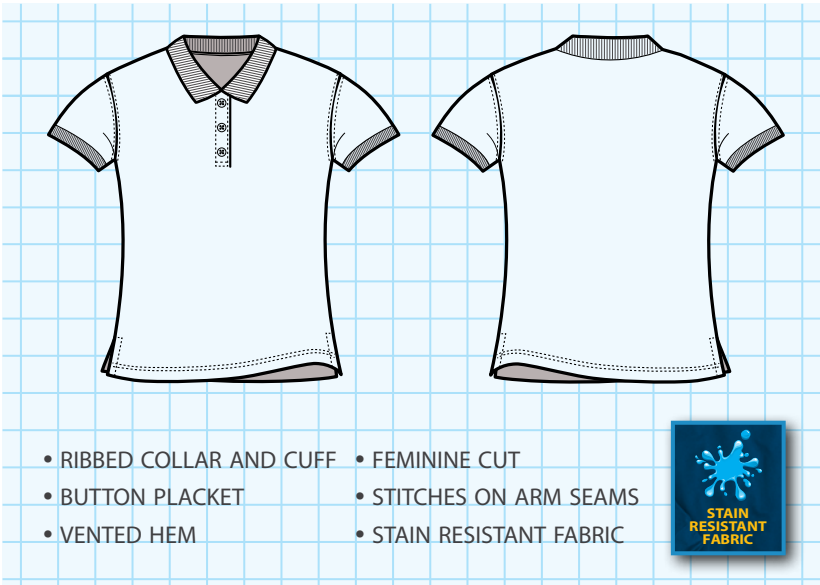
| U837*     | White | Yellow | Lt. Blue | Gold | Red | H. Green | Burgundy | Navy |
|-----------|-------|--------|----------|------|-----|----------|----------|------|
| 4 - 7     | •     | •      | •        | •    | •   | •        | •        | •    |
| 8 - 14    | •     | •      | •        | •    | •   | •        | •        | •    |
| 16 - 20   | •     | •      | •        | •    | •   | •        | •        | •    |
| S - 2XL   | •     | •      | •        | •    | •   | •        | •        | •    |
| 3XL - 5XL | •     |        | •        | •    | •   | •        | •        | •    |

Cotton and Polyester blend fabric. Machine Washable.

\* While supplies last.

just for girls

The girl's short sleeve pique polo shirt is built to last and it is perfect for school. It's made with a smaller collar and gently shaped side seams. All girls should have this item on all colors. Made from 60% Cotton and 40% Polyester, we also added Stain Resistance for easy stain removal.



# Stain Resistant

Our Stain Resistant fabric makes it easier to remove most stains.  
While kids enjoy a good time,  
Moms and Dads enjoy *peace of mind!*

PIQUE POLO SHIRT  
WITH FEMININE CUT AND  
STAIN RESISTANT FABRIC

|  |           |           |             |              |       |         |     |          |          |      |
|--|-----------|-----------|-------------|--------------|-------|---------|-----|----------|----------|------|
| U543   | White     | Yellow    | Lt. Blue    | Pink         | Black | R. Blue | Red | H. Green | Burgundy | Navy |
| TODDLER  |           |           |             |              |       |         |     |          |          |      |
| 2T - 4T  | •         | •         | •           | •            | •     | •       | •   | •        | •        | •    |
| YOUTH  |           |           |             |              |       |         |     |          |          |      |
| YXS - YXL  | •         | •         | •           | •            | •     | •       | •   | •        | •        | •    |
| YOUNG LADIES   |           |           |             |              |       |         |     |          |          |      |
| XS - XL  | •         | •         | •           | •            | •     | •       | •   | •        | •        | •    |
| Cotton and Polyester blend fabric. Machine Washable. |           |           |             |              |       |         |     |          |          |      |
| YXS<br>4   | YS<br>5/6 | YM<br>7/8 | YL<br>10/12 | YXL<br>14/16 |       |         |     |          |          |      |



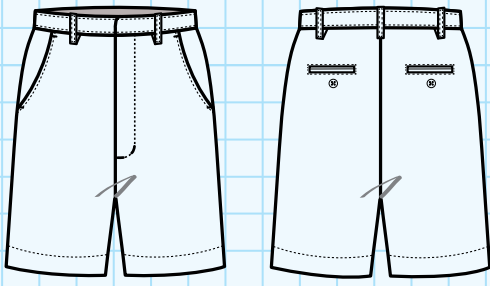
# Shorts and Pants

SCHOOL ESSENTIALS FOR BOYS

Durable. Comfortable. Easy Care.

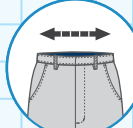
# a school standard

These flat front shorts feature adjustable elastic waist for a perfect fit while allowing room to grow.



FRONTBACK

- ADJUSTABLE WAIST
- TWO FRONT AND BACK POCKETS
- HOOK AND EYE CLOSURE



## FLAT FRONT SHORTS WITH ADJUSTABLE WAIST

| U643   | Navy | Khaki | Black | Grey |
|--|------|-------|-------|------|
| 2T - 4T  | •    | •     | •     | •    |
| 4 - 7  | •    | •     | •     | •    |
| 8 - 14   | •    | •     | •     | •    |
| 16 - 20  | •    | •     | •     | •    |
| 8H - 20H   | •    | •     | •     | •    |
| 28 - 44  | •    | •     | •     | •    |
| Size 2T - 4T pull-up full elastic.<br>Men size 28 - 44 does not have adjustable waist. |      |       |       |      |
| Cotton and Polyester blend fabric. Machine Washable.                                   |      |       |       |      |



# practical works

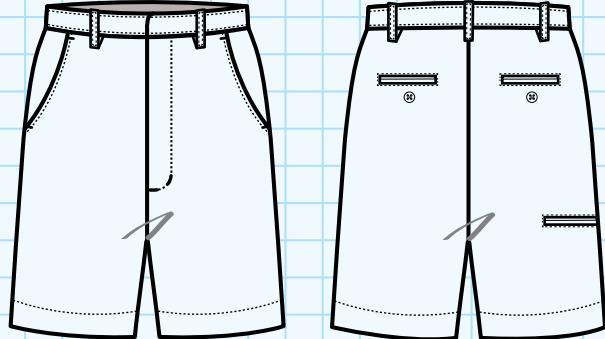
These flat front shorts are comfortable and versatile, with its adjustable elastic waist and cellphone pocket.

## FLAT FRONT SHORTS WITH CELLPHONE POCKET AND ADJUSTABLE WAIST

| U645   | Navy | Khaki | Black* | Grey* |
|--|------|-------|--------|-------|
| 4 - 7  | •    | •     | •      | •     |
| 8 - 14   | •    | •     | •      | •     |
| 16 - 20  | •    | •     | •      | •     |
| 10H - 20H  | •    | •     | •      | •     |
| 28 - 42  | •    | •     | •      | •     |
| Men Size 28 - 42 does not have adjustable waist.     |      |       |        |       |
| Cotton and Polyester blend fabric. Machine Washable. |      |       |        |       |


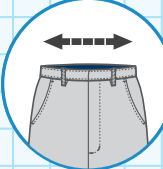
\* While supplies last.





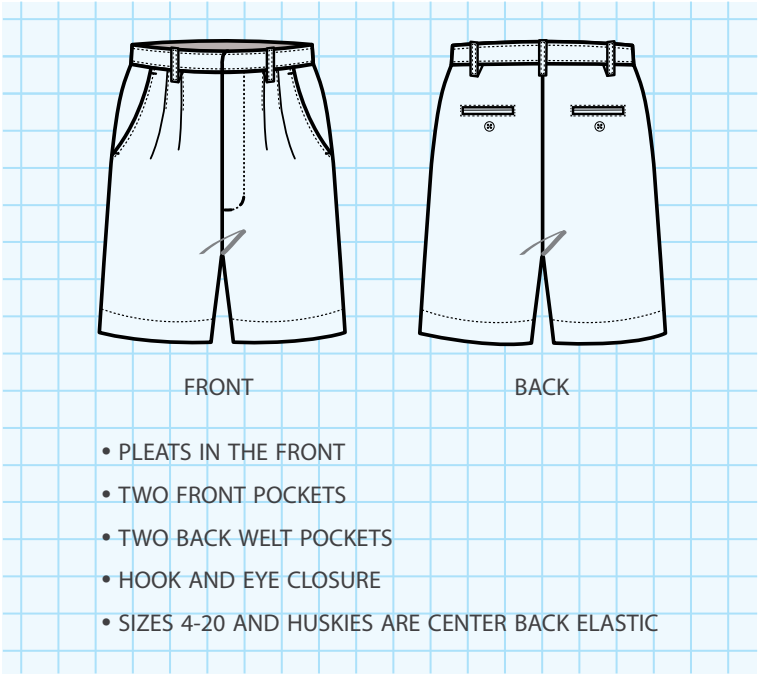
FRONTBACK

- ADJUSTABLE WAIST
- TWO FRONT POCKETS
- TWO BACK WELT POCKETS
- DROP-IN CELLPHONE POCKET
- HOOK AND EYE CLOSURE










# never goes out of style

These classic front pleated shorts never go out of style! They are nicely tailored with pockets on both sides and welt pockets in the back.



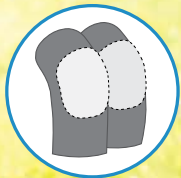
## PLEATED FRONT SHORTS

| U680   |  Navy |  Khaki |  Black |  Grey |  H. Green |  Burgundy |  Brown |
|--|--|---|---|--|--|--|--|
| 2T - 4T  | •  | •   | •   | •  | •  | •  | •  |
| 4 - 7  | •  | •   | •   | •  | •  | •  | •  |
| 8 - 14   | •  | •   | •   | •  | •  | •  | •  |
| 16 - 20  | •  | •   | •   | •  | •  | •  | •  |
| 8H - 20H   | •  | •   | •   | •  | •  | •  | •  |
| 28 - 44  | •  | •   | •   | •  |  |  |  |
| Size 2T - 4T pull-up full elastic.                   |  |   |   |  |  |  |  |
| Cotton and Polyester blend fabric. Machine Washable. |  |   |   |  |  |  |  |



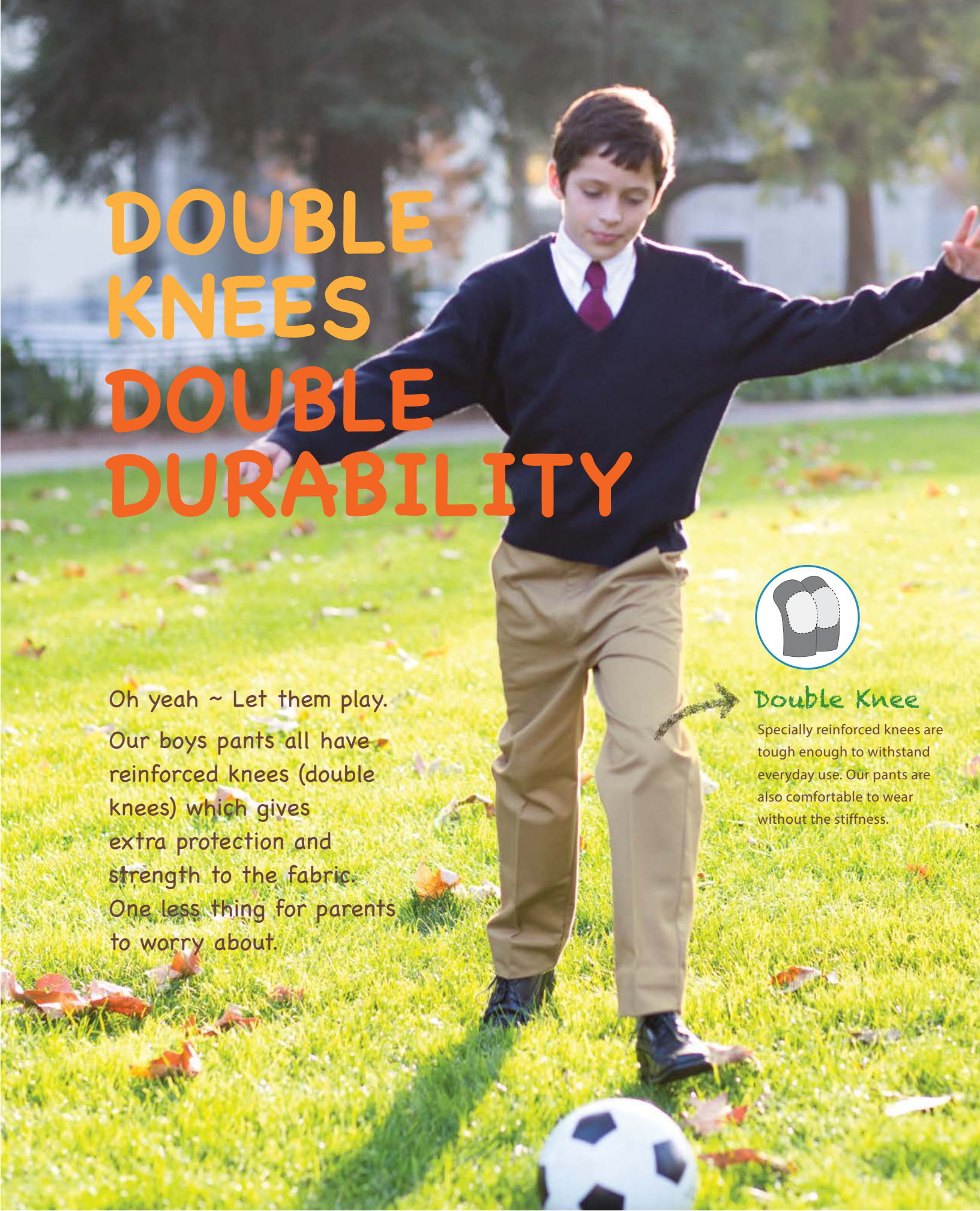
# DOUBLE KNEES DOUBLE DURABILITY

Oh yeah ~ Let them play. Our boys pants all have reinforced knees (double knees) which gives extra protection and strength to the fabric. One less thing for parents to worry about.



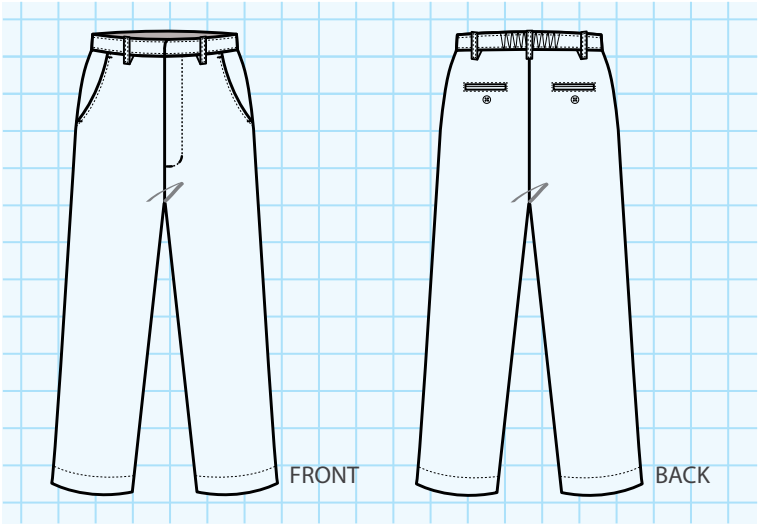
## Double Knee

Specially reinforced knees are tough enough to withstand everyday use. Our pants are also comfortable to wear without the stiffness.



# a must have!

As a back-to-school necessity, these twill flat front pants have reinforced knees, two front pockets, two back welt pockets with button, and a hook-and-eye closure.

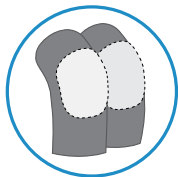


## FLAT FRONT PANTS WITH DOUBLE KNEES

| U647     | Navy | Khaki | Black | Grey | H. Green | Brown |
|----------|------|-------|-------|------|----------|-------|
| 2T - 4T  | •    | •     | •     | •    | •        | •     |
| 4 - 7    | •    | •     | •     | •    | •        | •     |
| 8 - 14   | •    | •     | •     | •    | •        | •     |
| 16 - 20  | •    | •     | •     | •    | •        | •     |
| 8H - 20H | •    | •     | •     | •    | •        | •     |
| 4S - 7S  | •    | •     | •     |      |          | •     |
| 8S - 14S | •    | •     | •     |      |          | •     |

Size 2T - 4T pull-up full elastic.  
Size 4 - 14S center back elastic.

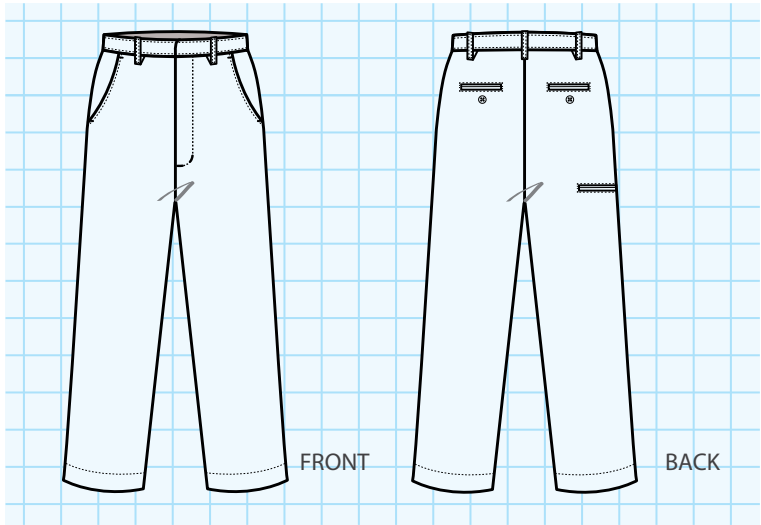
Cotton and Polyester blend fabric.  
Machine Washable.



- DOUBLE KNEES
- TWO FRONT POCKETS
- TWO BACK WELT POCKETS
- HOOK AND EYE CLOSURE
- SIZES 2T-4T FULL ELASTIC
- SIZES 4-14S CENTER BACK ELASTIC

# one word... practical

A versatile flat front pant with cellphone pocket, two front pockets, two welt back pockets with button, cell phone pocket, reinforced knees, and an adjustable elastic waist.



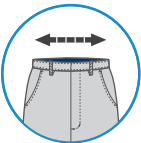
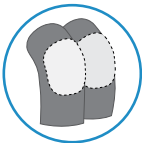
## FLAT FRONT PANTS WITH CELLPHONE POCKET, ADJUSTABLE WAIST AND DOUBLE KNEES

| U649      | Navy | Khaki | Black* | Grey* |
|-----------|------|-------|--------|-------|
| 4 - 7     | •    | •     | •      | •     |
| 8 - 14    | •    | •     | •      | •     |
| 16 - 20   | •    | •     | •      | •     |
| 10H - 20H | •    | •     | •      | •     |
| 28 - 42   | •    | •     | •      |       |

Men Size 28 - 42 does not have adjustable waist.

Cotton and Polyester blend fabric. Machine Washable.

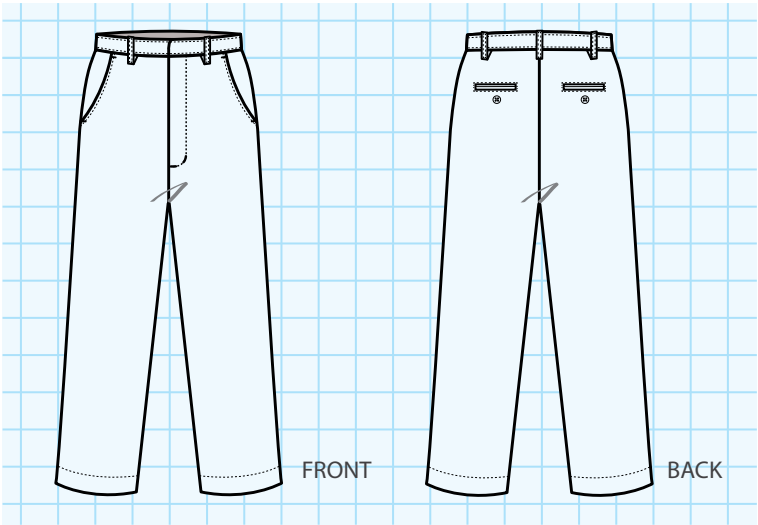
\* While supplies last.



- DOUBLE KNEES
- TWO FRONT POCKETS
- TWO BACK WELT POCKETS
- DROP-IN CELLPHONE POCKET
- HOOK AND EYE CLOSURE
- ADJUSTABLE WAIST
- DROP-IN CELLPHONE POCKET

# looking and feeling good

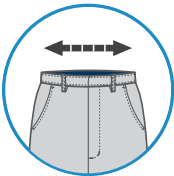
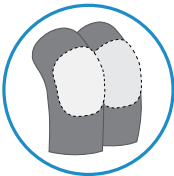
With two front pockets, two back welt pockets with button, reinforced knees, and an adjustable elastic waist.



## FLAT FRONT PANTS

WITH ADJUSTABLE WAIST AND DOUBLE KNEES

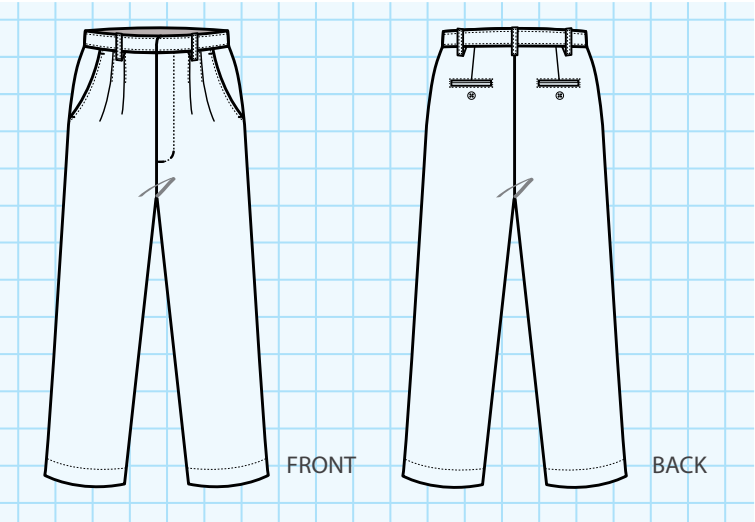
| U651   | Navy | Khaki | Black | Grey | H. Green | Brown |
|--|------|-------|-------|------|----------|-------|
| 4 - 7  | •    | •     | •     | •    |          |       |
| 8 - 14   | •    | •     | •     | •    |          |       |
| 16 - 20  | •    | •     | •     | •    |          |       |
| 8H - 20H   | •    | •     | •     | •    |          |       |
| 28 - 42  | •    | •     | •     | •    | •        | •     |
| Men Size 28 - 42 does not have adjustable waist.     |      |       |       |      |          |       |
| Cotton and Polyester blend fabric. Machine Washable. |      |       |       |      |          |       |



- DOUBLE KNEES
- ADJUSTABLE WAIST
- TWO BACK WELT POCKETS WITH BUTTON
- HOOK AND EYE CLOSURE

# a school essential

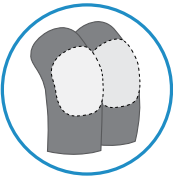
Our pants with flattering front pleats is another back-to-school must have item. These pants have reinforced knees for durability and tough outdoor activities.



## PLEATED FRONT PANTS

WITH DOUBLE KNEES

| U688   | Navy | Khaki | Black | Grey | H. Green | Burgundy | Brown |
|--|------|-------|-------|------|----------|----------|-------|
| 2T - 4T  | •    | •     | •     | •    | •        | •        |       |
| 4 - 7  | •    | •     | •     | •    | •        | •        | •     |
| 8 - 14   | •    | •     | •     | •    | •        | •        | •     |
| 16 - 20  | •    | •     | •     | •    | •        | •        | •     |
| 10H - 20H  | •    | •     | •     | •    | •        | •        | •     |
| 4S - 7S  | •    | •     | •     |      |          |          |       |
| 8S - 14S   | •    | •     | •     |      |          |          |       |
| 28 - 42  | •    | •     | •     | •    | •        | •        | •     |
| Size 2T - 4T pull-up full elastic.                   |      |       |       |      |          |          |       |
| Cotton and Polyester blend fabric. Machine Washable. |      |       |       |      |          |          |       |

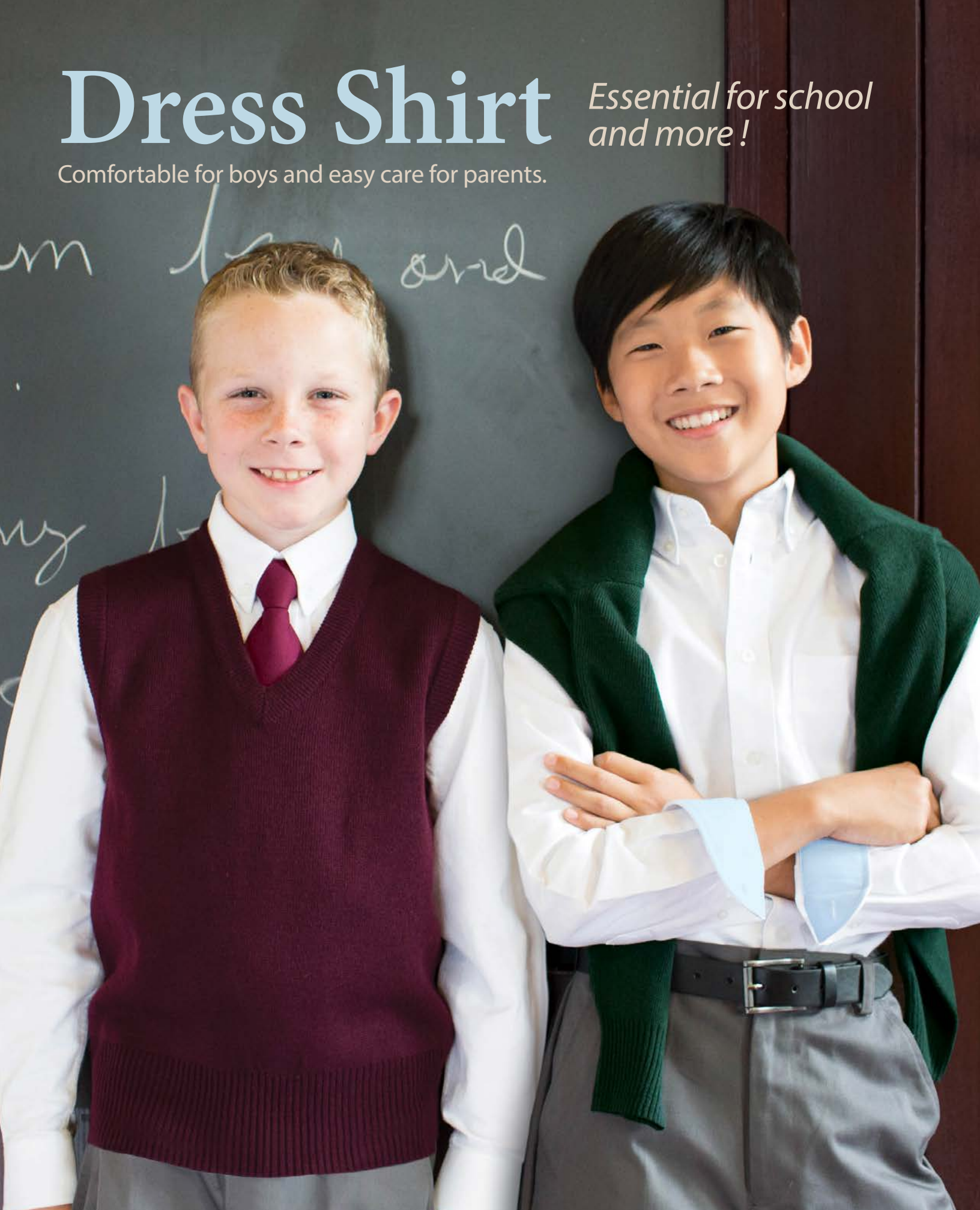


- DOUBLE KNEES
- TWO FRONT POCKETS
- TWO BACK WELT POCKETS
- HOOK AND EYE CLOSURE
- 2T - 4T PULL-UP FULL ELASTIC

# Dress Shirt

Comfortable for boys and easy care for parents.

*Essential for school  
and more!*



## crisp and lightweight

Our broadcloth shirt comes with expanded collar to allow easy fit, and a back pleat. A blend of 60% Cotton and 40% Polyester ensures comfort and easy care.

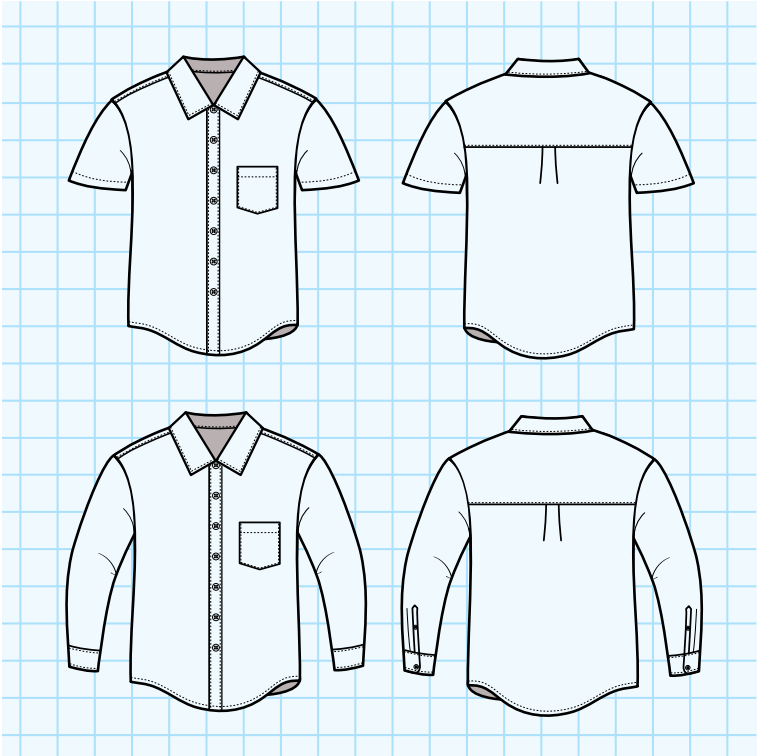
- REGULAR FIT
- CHEST PATCH POCKET

### CLASSIC DRESS SHIRT SHORT SLEEVE

| U870  |       |          |        |
|---|-------|----------|--------|
|   | White | Lt. Blue | Yellow |
| 4 -7  | •     | •        | •      |
| 8 - 14  | •     | •        | •      |
| 16 - 20   | •     | •        | •      |
| 10H - 20H   | •     | •        | •      |
| Cotton and Polyester blend fabric.<br>Machine Washable. |       |          |        |

### CLASSIC DRESS SHIRT LONG SLEEVE

| U875  |       |          |        |
|---|-------|----------|--------|
|   | White | Lt. Blue | Yellow |
| 4 -7  | •     | •        | •      |
| 8 - 14  | •     | •        | •      |
| 16 - 20   | •     | •        | •      |
| 10H - 20H   | •     | •        | •      |
| Cotton and Polyester blend fabric.<br>Machine Washable. |       |          |        |



# sharp and classy

With a blend of 60% Cotton and 40% Polyester, our oxford shirts are designed for easy care. Detailed with a back pleat and button closure placket.

- REGULAR FIT
- CHEST PATCH POCKET

## OXFORD DRESS SHIRT SHORT SLEEVE

U877

White

Lt. Blue

|           |   |   |
|-----------|---|---|
| 4 - 7     | • | • |
| 8 - 14    | • | • |
| 16 - 20   | • | • |
| 10H - 20H | • | • |

Cotton and Polyester blend fabric.  
Machine Washable.

## OXFORD DRESS SHIRT LONG SLEEVE

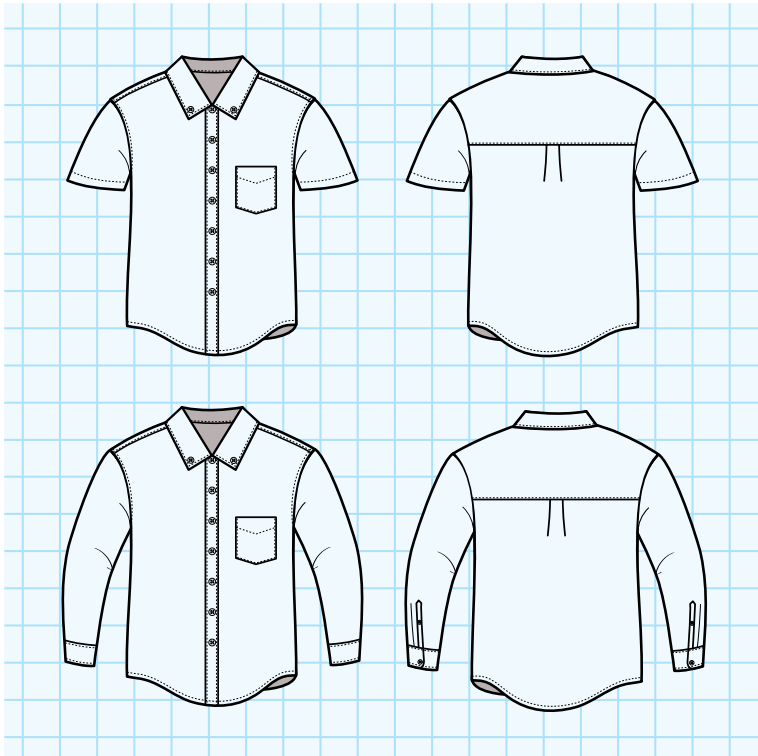
U879

White

Lt. Blue

|           |   |   |
|-----------|---|---|
| 4 - 7     | • | • |
| 8 - 14    | • | • |
| 16 - 20   | • | • |
| 10H - 20H | • | • |

Cotton and Polyester blend fabric.  
Machine Washable.



# it's all in the details

With a blend of 60% Cotton and 40% Polyester, our oxford shirts are designed for easy care. Detailed with back pleat and button closure placket.

- REGULAR FIT
- CHEST PATCH POCKET
- LIGHT BLUE ACCENTS COLOR ON INSIDE COLLAR AND CUFF

## OXFORD DRESS SHIRT WITH **BLUE CONTRAST TRIM** SHORT SLEEVE

U880

White

|           |   |
|-----------|---|
| 4 - 7     | • |
| 8 - 14    | • |
| 16 - 20   | • |
| 10H - 20H | • |

Cotton and Polyester blend fabric.  
Machine Washable.

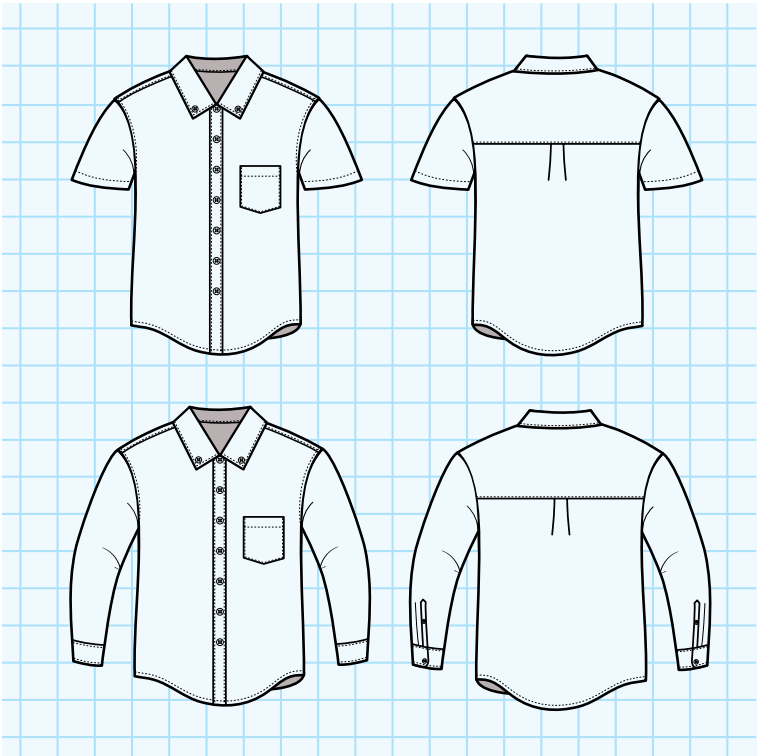
## OXFORD DRESS SHIRT WITH **BLUE CONTRAST TRIM** LONG SLEEVE

U881

White

|           |   |
|-----------|---|
| 4 - 7     | • |
| 8 - 14    | • |
| 16 - 20   | • |
| 10H - 20H | • |

Cotton and Polyester blend fabric.  
Machine Washable.



# Skorts Scooters & Jumpers

Trendy and comfortable with secret  
knitted shorts underneath.

*Loved by Girls! Mom approved!*





SCOOTER WITH  
FLOWERS DECORATIVE

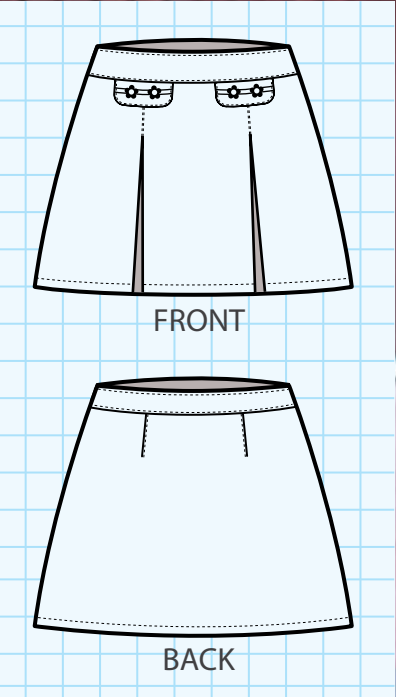
A very neat skort with  
two front box pleats and  
knitted shorts underneath.

| U602       |      |       |
|------------|------|-------|
|            | Navy | Khaki |
| 2T - 4T    | ●    | ●     |
| 4 - 6X     | ●    | ●     |
| 7 - 14     | ●    | ●     |
| 16 - 20    | ●    | ●     |
| 7.5 - 20.5 | ●    | ●     |

2T - 4T only with full back elastic.

Polyester and Rayon blend fabric.  
Machine Washable.

- PLEATS
- DECORATIVE FLAPS
- FLOWER WITH RIBBON ACCENTS
- SIDE ZIPPER
- ADJUSTABLE WAIST
- SCOOTER LENGTH ABOVE KNEE



WIDE WAISTBAND  
SKORT WITH  
DECORATIVE BUTTONS

Beautifully crafted.  
Front knife pleats.

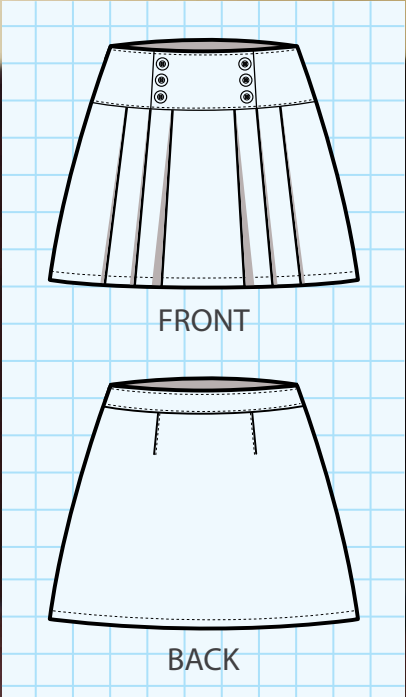
| U604       |      |       |
|------------|------|-------|
|            | Navy | Khaki |
| 2T - 4T    | ●    | ●     |
| 4 - 6X     | ●    | ●     |
| 7 - 14     | ●    | ●     |
| 16 - 20    | ●    | ●     |
| 7.5 - 20.5 | ●    | ●     |

2T - 4T are full back elastic.

Polyester and Rayon blend fabric.  
Machine Washable.

- KNIFE PLEATS
- SIX DECORATIVE BUTTONS
- SIDE ZIPPER
- ADJUSTABLE WAIST
- SKORT LENGTH ABOVE KNEE

SEE SKETCH FOR PLEATS.



# back to basic

A two-side skort with two front and back side pleats. Knitted shorts underneath for maximum coverage and comfort.

## PLEATED SKORT

TWO-SIDE

U580

Navy

Khaki

Black

|            |   |   |   |
|------------|---|---|---|
| 2T - 4T    | • | • | • |
| 4 - 6X     | • | • | • |
| 7 - 14     | • | • | • |
| 16 - 20    | • | • | • |
| 7.5 - 20.5 | • | • | • |
| 3 - 15     | • | • | • |

Polyester and Rayon blend fabric.  
Machine Washable.



# simply pretty

This skort has both knife and box pleats giving it a great look as well as room for movement. And this skort has an adjustable elastic waist for a comfortable fit and room for growth. With two decorative front buttons and polyester shorts, we are sure both parents and children will fall in love with this addition!

## KNIFE AND BOX PLEATED SKORT

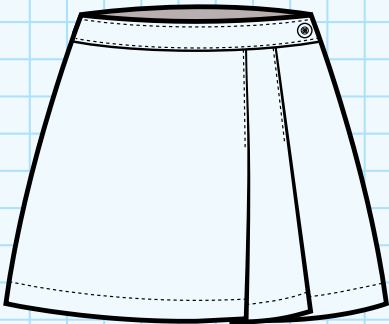
U593

Navy

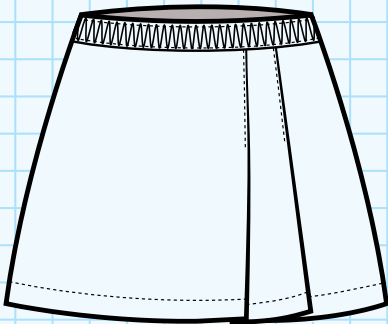
Khaki

|            |   |   |
|------------|---|---|
| PULL ON    |   |   |
| 2T - 4T    | • | • |
| 4 - 6X     | • | • |
| ZIPPER     |   |   |
| 7 - 14     | • | • |
| 16 - 20    | • | • |
| 7.5 - 20.5 | • | • |

Polyester and Rayon blend fabric.  
Machine Washable.

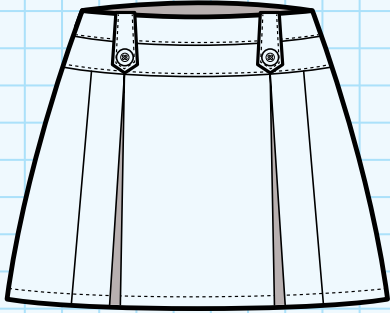


FRONT

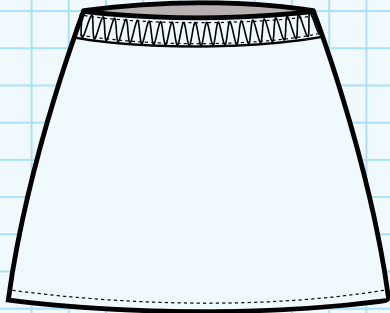


BACK

- SIDE BUTTON WITH ZIPPER
- KNITTED SHORTS UNDERNEATH
- PLEATS ON BOTH FRONT AND BACK
- SKORT LENGTH ABOVE KNEE
- FULL BACK ELASTIC ON SIZES 2T - 20.5



FRONT



BACK

- SIDE ZIPPER WITH HOOK AND EYE CLOSURE
- KNITTED SHORT UNDERNEATH
- SKORT LENGTH ABOVE KNEE

# all about flowers

This wrap skort with center metal buckle has a full back elastic waistband for a perfect fit.

## SKORT WITH CENTER METAL BUCKLE

U592

Navy

Khaki

Black

|            |   |   |   |
|------------|---|---|---|
| PULL ON    |   |   |   |
| 2T - 4T    | ● | ● | ● |
| 4 - 6X     | ● | ● | ● |
| 7 - 14     | ● | ● | ● |
| 16 - 20    | ● | ● | ● |
| 7.5 - 20.5 | ● | ● | ● |
| ZIPPER     |   |   |   |
| 3 - 15 *   | ● | ● |   |

Polyester and Rayon blend fabric.  
Machine Washable.

\* While supplies last.



# all time best seller

This best seller skort is detailed with four front pleats, decorative tabs, side zipper and full back elastic waistband.

## SKORT WITH PLEATS AND BUTTONS

U588

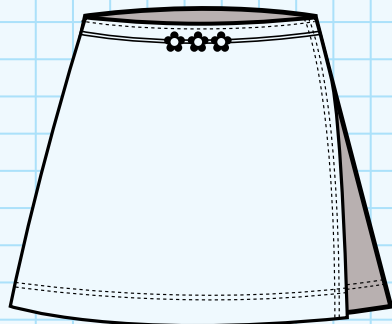
Navy

Khaki

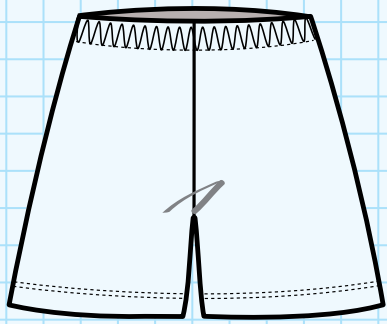
|            |   |   |
|------------|---|---|
| 2T - 4T    | ● | ● |
| 4 - 6X     | ● | ● |
| 7 - 14     | ● | ● |
| 16 - 20    | ● | ● |
| 7.5 - 20.5 | ● | ● |
| 3 - 15     | ● | ● |

Size 3-15 without full back elastic.

Polyester and Rayon blend fabric.  
Machine Washable.

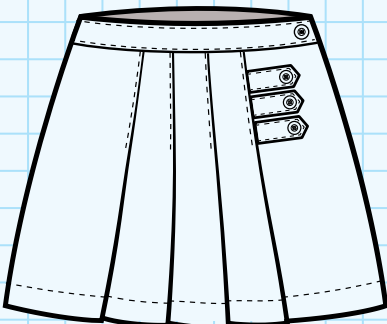


FRONT

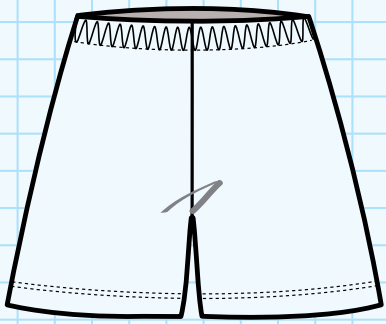


BACK

- PULL ON
- SKORT LENGTH ABOVE KNEE
- DECORATIVE FLOWER BUCKLE
- FULL BACK ELASTIC WAISTBAND
- SHORTS VISIBLE IN THE BACK



FRONT



BACK

- SIDE BUTTON WITH ZIPPER
- SKORT LENGTH ABOVE KNEE
- FULL BACK ELASTIC WAISTBAND
- SHORTS VISIBLE IN THE BACK

# clean and classic

A neat and simple pull-on skort with full back elastic waistband for a comfortable fit.

## SKORT WITH TWO STITCH DOWN BOX PLEATS

U594\*

Navy

Khaki

|            |   |   |
|------------|---|---|
| 2T - 4T    | • | • |
| 4 - 6X     | • | • |
| 7 - 14     | • | • |
| 16 - 20    | • | • |
| 7.5 - 20.5 | • | • |
| 3 - 15     | • | • |

Polyester and Rayon blend fabric.  
Machine Washable.

\* While supplies last.



# flexible yet chic

This scooter with box pleats adds variety to our collection of uniforms.

## SCOOTER WITH BOX PLEATS

U597\*

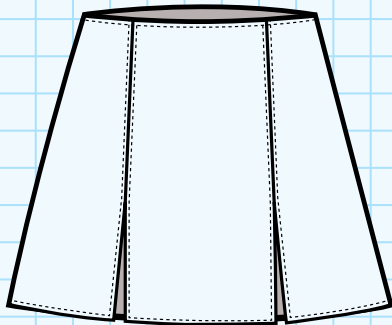
Navy

Khaki

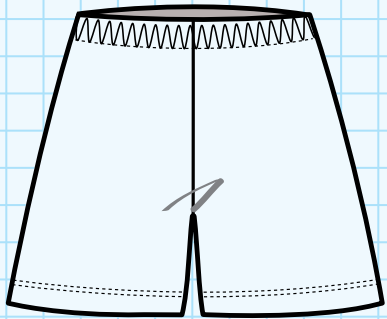
|            |   |   |
|------------|---|---|
| 2T - 4T    | • | • |
| 4 - 6X     | • | • |
| 7 - 14     | • | • |
| 16 - 20    | • | • |
| 7.5 - 20.5 | • | • |

Polyester and Rayon blend fabric.  
Machine Washable.

\* While supplies last.

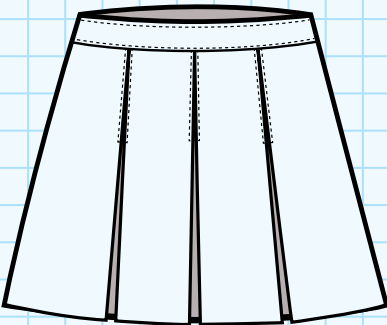


FRONT

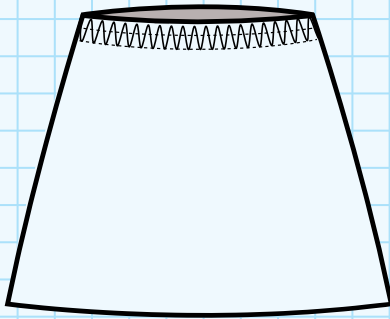


BACK

- PULL ON
- SKORT LENGTH ABOVE KNEE
- FULL BACK ELASTIC WAISTBAND
- VISIBLE SHORTS FROM BEHIND



FRONT



BACK

- PULL ON
- KNITTED SHORTS UNDERNEATH
- SKORT LENGTH ABOVE KNEE
- FULL BACK ELASTIC WAISTBAND

# have some school fun

This classic skirt jumper with a v-neck shape has baked-in pretty knife pleats all around. Easy to dress and iron free.

## V-NECK PLEATED JUMPER

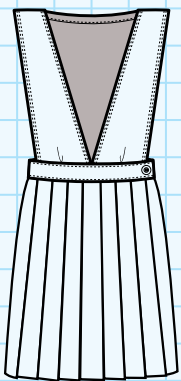
U720

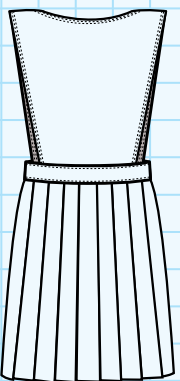
Navy

Khaki

|            |   |   |
|------------|---|---|
| 2T - 4T    | • | • |
| 4 - 6X     | • | • |
| 7 - 14     | • | • |
| 16 - 20    | • | • |
| 7.5 - 20.5 | • | • |

Polyester and Rayon blend fabric.  
Machine Washable.





FRONT

BACK

- ROOMY PLEATS ALL AROUND
- SIDE ZIPPER WITH A BUTTON
- JUMPER LENGTH ABOVE KNEE
- KNITTED SHORT IS AVAILABLE FOR ADD-ON. STYLE #U616 SEE PAGE 43



# dress easy and relax

This fun-to-wear skirt jumper with a round neck has a button tab closure, front zipper and pleats for comfortable movements.

## SKIRT JUMPER

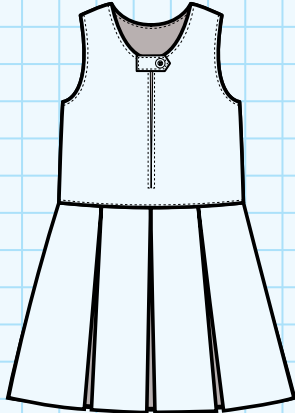
U922

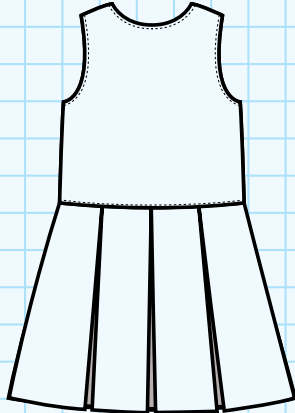
Navy

Khaki

|            |   |   |
|------------|---|---|
| 4 - 6X     | • | • |
| 7 - 14     | • | • |
| 16 - 20    | • | • |
| 7.5 - 20.5 | • | • |

Polyester and Rayon blend fabric.  
Machine Washable.





FRONT

BACK

- FRONT ZIPPER WITH A BUTTON TAB
- PLEATS ALL AROUND
- JUMPER LENGTH ABOVE KNEE
- KNITTED SHORT IS AVAILABLE FOR ADD-ON

STYLE #U616 PLEASE SEE PAGE 43





# Shorts and Pants

SCHOOL ESSENTIALS FOR GIRLS

Comfortable. Stylish. Easy Care.

# a timeless school essential

These shorts are versatile with two pockets. Now available with adjustable waist.

## BASIC FRONT POCKET SHORTS WITH ADJUSTABLE WAIST

U615

Navy

Khaki

Black

|            |   |   |   |
|------------|---|---|---|
| 4 - 6X     | • | • | • |
| 7 - 14     | • | • | • |
| 16 - 20    | • | • | • |
| 7.5 - 20.5 | • | • | • |
| 3 - 15     | • | • | • |

Cotton and Polyester blend fabric.  
Machine Washable.



# showing the playful personality

Not only are these shorts comfortable, they are also very stylish; with side slits, two front pockets and fashionable belt loops.

## FLAT FRONT SHORTS WITH FANCY BELT LOOP AND ADJUSTABLE WAIST

U617\*

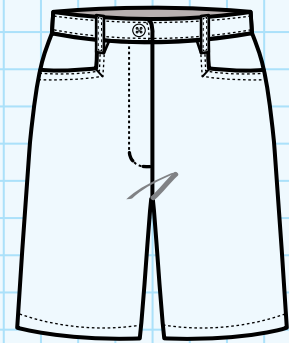
Navy

Khaki

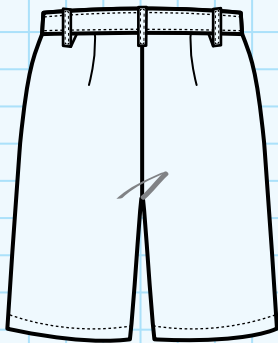
Black

|         |   |   |   |
|---------|---|---|---|
| 4 - 6X  | • | • | • |
| 7 - 14  | • | • | • |
| 16 - 20 | • | • | • |
| 3 - 15  | • | • | • |

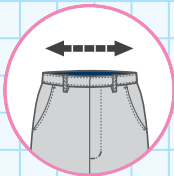
Cotton and Polyester blend fabric.  
Machine Washable.



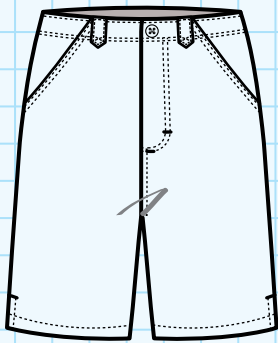
FRONT



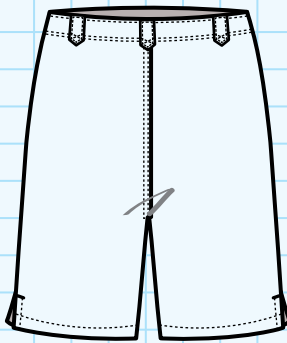
BACK



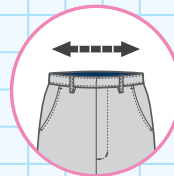
- ADJUSTABLE WAIST
- TWO FRONT POCKET
- BUTTON CLOSURE



FRONT



BACK



- ADJUSTABLE WAIST
- BUTTON CLOSURE
- SIDE SLITS
- FANCY BELT LOOPS



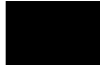
\* While supplies last.

# comfort with a traditional look

A traditional pleated short with two front pockets.

## SHORTS

WITH FRONT PLEATS

| U618*      |  |  |  |
|------------|---|---|---|
|            | Navy  | Khaki   | Black   |
| 2T - 4T    | ●   | ●   | ●   |
| 4 - 6X     | ●   | ●   | ●   |
| 7 - 14     | ●   | ●   | ●   |
| 16 - 20    | ●   | ●   | ●   |
| 7.5 - 20.5 | ●   | ●   | ●   |

Sizes 2T - 4T pull-up full elastic.

Cotton and Polyester blend fabric.  
Machine Washable.

\* While supplies last.



# stretch out

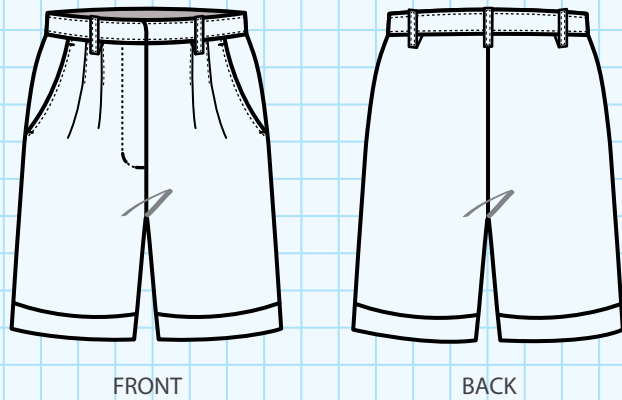
Our comfortable bermuda shorts are constructed from a blend of Cotton and Spandex. It has an adjustable elastic waistband with two back welt pockets. This is a must have item for the back-to-school season.

## BERMUDA SHORTS

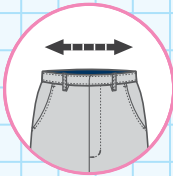
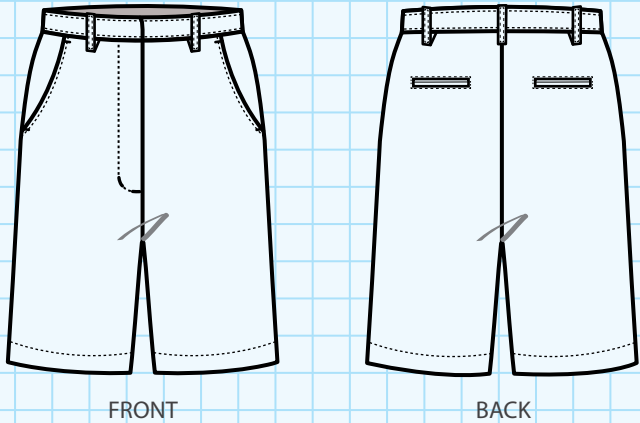
WITH STRETCH FABRIC

| U624             |  |  |  |
|------------------|---|---|---|
|                  | Navy  | Khaki   | Black   |
| BACK ELASTIC     |   |   |   |
| 4 - 6X           | ●   | ●   | ●   |
| ADJUSTABLE WAIST |   |   |   |
| 7 - 14           | ●   | ●   | ●   |
| 16 - 20          | ●   | ●   | ●   |
| 10.5 - 20.5      | ●   | ●   | ●   |
| 3 - 15           | ●   | ●   | ●   |

Cotton and Spandex blend fabric.  
Machine Washable.



- FRONT PLEATS
- TWO FRONT WELT POCKETS
- SIZES 4-20.5 HOOK AND EYE CLOSURE






- HOOK AND EYE CLOSURE
- SIZE 7 - 15JR ADJUSTABLE WAIST
- STRETCH FABRIC
- TWO BACK WELT POCKETS

# school time to play time



This new addition to our line of shorts is constructed from a Polyester/Cotton blend. It has two front and back pockets with an adjustable waist.

## FLAT FRONT SHORTS WITH TWO BACK WELT POCKETS AND ADJUSTABLE WAIST

| U636       |  Navy |  Khaki |  Black |
|------------|--|---|---|
| 4 - 6X     | ●  | ●   | ●   |
| 7 - 14     | ●  | ●   | ●   |
| 16 - 20    | ●  | ●   | ●   |
| 7.5 - 20.5 | ●  | ●   | ●   |
| 3 - 15     | ●  | ●   | ●   |


Cotton and Polyester blend fabric.  
Machine Washable.



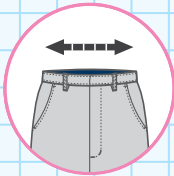
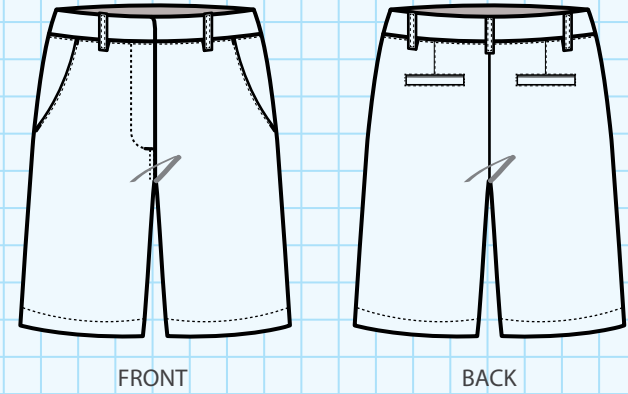
# the hidden secret

These shorts are so comfortable that every girl would want a pair! They can be worn under skirts, jumpers, or even by itself. The waist band stretches for great comfort.

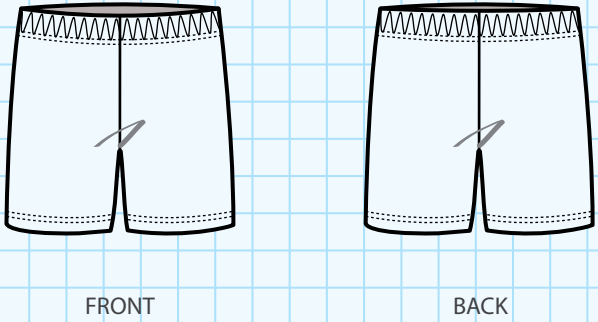
## KNITTED SHORT

| U616       |  Navy |
|------------|--|
| XS (4/5)   | ●  |
| S (6/8)    | ●  |
| M (10/12)  | ●  |
| L (14/16)  | ●  |
| XL (18/20) | ●  |

Cotton and Spandex blend fabric.  
Machine Washable.



- ADJUSTABLE WAIST
- TWO FRONT POCKETS
- TWO BACK WELT POCKETS
- HOOK AND EYE CLOSURE



- FULL ELASTIC WAISTBAND

# modern classic capri

This hip and chic capri pants is a favorite in our school uniform line. It is detailed with two basic front pockets.

## CAPRI PANTS WITH ADJUSTABLE WAIST AND STRETCH FABRIC

U625\*

Navy

Khaki

Black

|            |   |   |   |
|------------|---|---|---|
| 4 - 6X     | • | • | • |
| 7 - 14     | • | • | • |
| 16 - 20    | • | • | • |
| 7.5 - 20.5 | • | • | • |
| 3 - 15     | • | • | • |

Cotton and Spandex blend fabric.  
Machine Washable.

\* While supplies last.



# a must have pair

These pants were made for style and comfort. It has two front pockets, fashionable belt loops and adjustable waist.

## FLAT FRONT PANTS WITH FANCY BELT LOOP AND ADJUSTABLE WAIST

U627

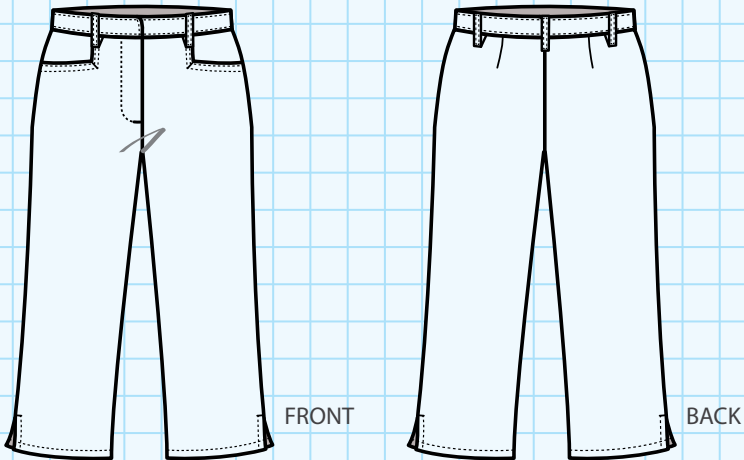
Navy

Khaki

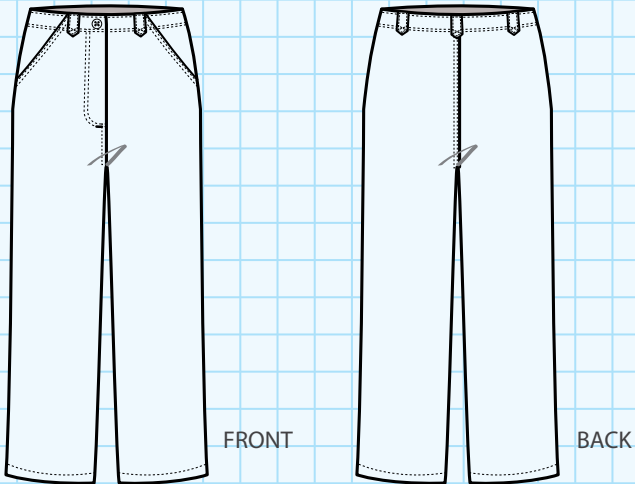
Black

|         |   |   |   |
|---------|---|---|---|
| 4 - 6X  | • | • | • |
| 7 - 14  | • | • | • |
| 16 - 20 | • | • | • |
| 3 - 15  | • | • | • |

Cotton and Polyester blend fabric.  
Machine Washable.



- TWO FRONT POCKETS
- ADJUSTABLE WAIST
- HOOK AND EYE CLOSURE
- STRETCH FABRIC



- ADJUSTABLE WAIST
- FANCY BELT LOOPS

# the original classic

These pants have two front pleats and two front pockets.

## PLEATED FRONT PANTS

U628\*

Navy

Khaki

Black

Burgundy

|            |   |   |   |   |
|------------|---|---|---|---|
| 2T - 4T    | • | • | • |   |
| 4 - 6X     | • | • | • | • |
| 7 - 14     | • | • | • | • |
| 16 - 20    | • | • | • | • |
| 7.5 - 20.5 | • | • | • |   |

Size 2T - 4T pull on.  
Sizes 4 - 20.5 hook and eye closure.

Cotton and Polyester blend fabric.  
Machine Washable.

\* While supplies last.



# bell bottoms are back

This pair of pants has bell bottoms and comes with two basic front pockets and an adjustable waist.

## PANTS WITH ADJUSTABLE WAIST AND BASIC FRONT POCKETS

U635\*

Navy

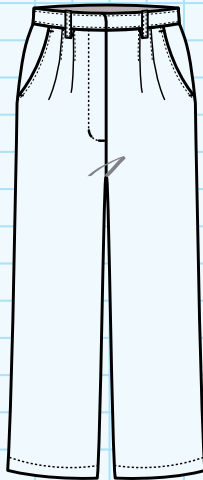
Khaki

Black

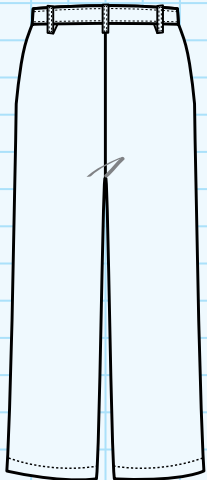
|            |   |   |   |
|------------|---|---|---|
| 4 - 6X     | • | • | • |
| 7 - 14     | • | • | • |
| 16 - 20    | • | • | • |
| 7.5 - 20.5 | • | • | • |
| 3 - 15     | • | • | • |

Cotton and Polyester blend fabric.  
Machine Washable.

\* While supplies last.

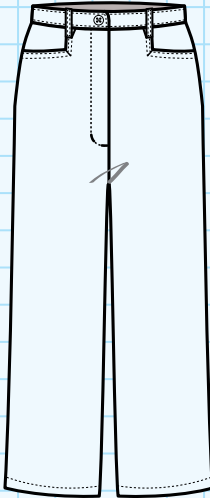


FRONT

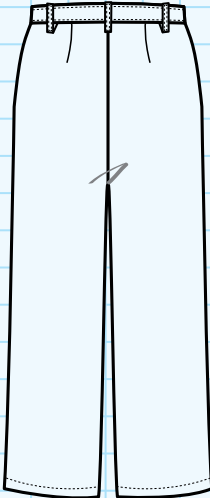


BACK

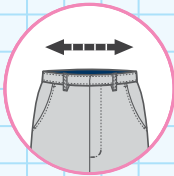
- SIZES 2T - 4T PULL ON WITH FAKE FLY
- SIZES 4 - 20.5 HOOK AND EYE CLOSURE
- FRONT PLEATS



FRONT



BACK



- TWO FRONT POCKETS
- ADJUSTABLE WAIST
- BELL BOTTOMS

# slim fit and stylish

Our new fitted and stylish straight leg pants with two front and back pockets comes with an adjustable waist.



## FLAT FRONT STRAIGHT LEG PANTS WITH TWO FRONT AND BACK POCKETS

U637

Navy

Khaki

|            |   |   |
|------------|---|---|
| 2T - 4T    | • | • |
| 4 - 6X     | • | • |
| 7 - 14     | • | • |
| 16 - 20    | • | • |
| 7.5 - 20.5 | • | • |

Size 2T - 4T pull on.

Cotton and Polyester blend fabric.  
Machine Washable.

# sleek and slim

A form fitting pants made with stretch fabric for comfort and a unique style.



## FLAT FRONT SKINNY PANTS WITH STRETCH FABRIC

U639

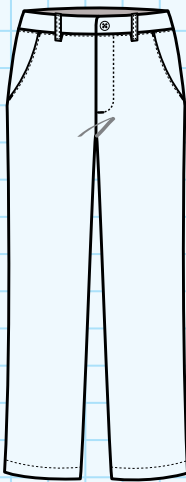
Navy

Khaki

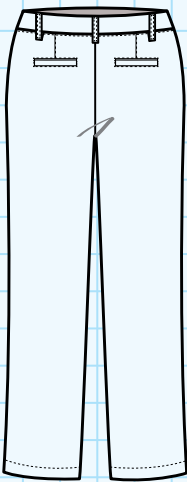
|         |   |   |
|---------|---|---|
| 2T - 4T | • | • |
| 4 - 6X  | • | • |
| 7 - 14  | • | • |
| 16 - 20 | • | • |
| 3 - 15  | • | • |

Size 2T - 4T pull on.

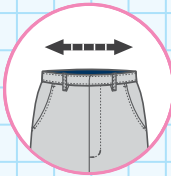
Cotton and Spandex blend fabric.  
Machine Washable.



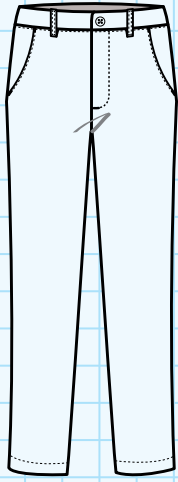
FRONT



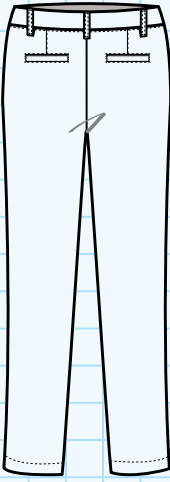
BACK



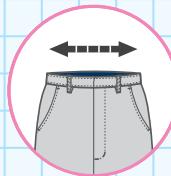
- ADJUSTABLE WAIST
- STRAIGHT LEG
- TWO BACK POCKETS
- SIZE 2T-4T PULL ON WITH FAKE FLY



FRONT



BACK



- ADJUSTABLE WAIST
- STRETCH FABRIC
- TWO BACK POCKETS
- SKINNY FIT
- SIZE 2T - 4T PULL ON WITH FAKE FLY



**Blouses**  
Easy to wear without  
sacrificing comfort

# fitted and stylish

Whether tucked in or out, this fitted blouse is exceptional.

## SHORT SLEEVE BLOUSE WITH FRONT WELT POCKET

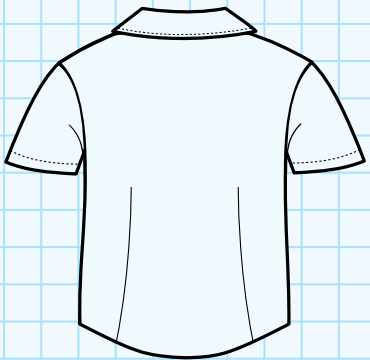
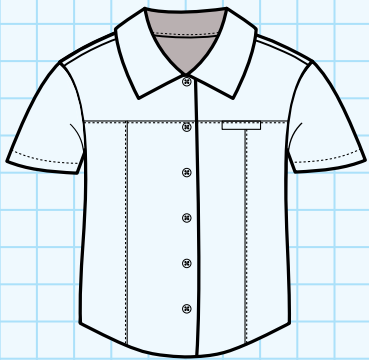
U583\*

White

|            |   |
|------------|---|
| 4 - 6X     | • |
| 7 - 14     | • |
| 16 - 20    | • |
| 7.5 - 20.5 | • |
| S - XL     | • |

Cotton and Polyester blend fabric.  
Machine Washable.

\* While supplies last.



- FITTED
- WELT POCKET
- SHORT SLEEVES

# adorable peter pan

Soft and tailored with a clean finish  
button placket and covered neck seam.

## PETER PAN COLLAR BLOUSE

SHORT SLEEVE

| U550  |       | *        | *      |
|---|-------|----------|--------|
|   | White | Lt. Blue | Yellow |
| 2T - 4T   | •     | •        | •      |
| 4 - 6X  | •     | •        | •      |
| 7 - 14  | •     | •        | •      |
| 16 - 20   | •     | •        | •      |
| 7.5 - 20.5 *  | •     | •        | •      |
| S - XL  | •     |          |        |
| Cotton and Polyester blend fabric.<br>Machine Washable. |       |          |        |

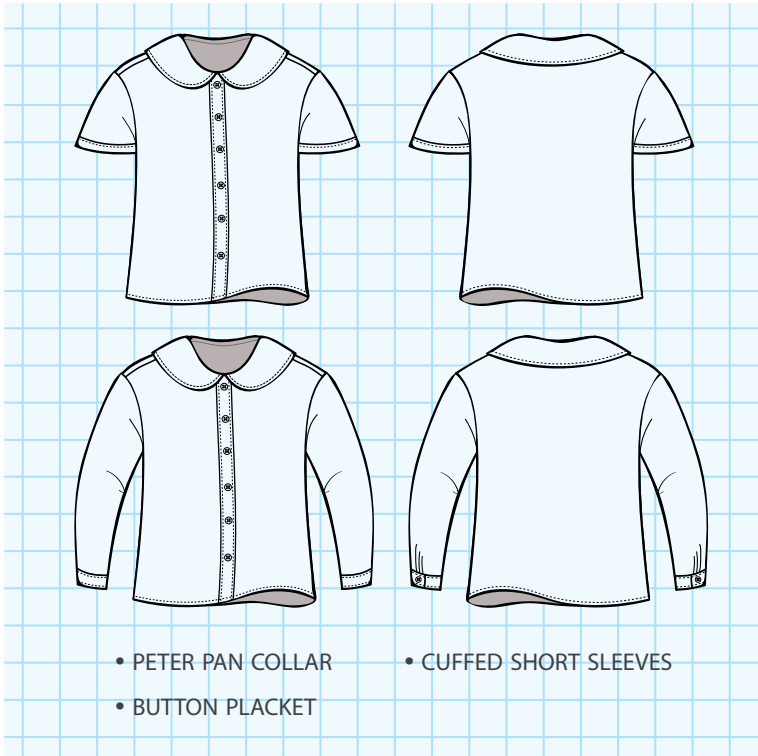
\* While supplies last.

## PETER PAN COLLAR BLOUSE

LONG SLEEVE

| U558  |       | *        | *      |
|---|-------|----------|--------|
|   | White | Lt. Blue | Yellow |
| 2T - 4T   | •     | •        | •      |
| 4 - 6X  | •     | •        | •      |
| 7 - 14  | •     | •        | •      |
| 16 - 20   | •     | •        | •      |
| 7.5 - 20.5 *  | •     | •        | •      |
| Cotton and Polyester blend fabric.<br>Machine Washable. |       |          |        |

\* While supplies last.



# neat and sporty

A very neat and sporty short sleeve  
blouse with a front patch pocket  
and pointed collar.

## POINTED COLLAR BLOUSE

SHORT SLEEVE

| U587  |       | *        | *      |
|---|-------|----------|--------|
|   | White | Lt. Blue | Yellow |
| 2T - 4T   | •     |          |        |
| 4 - 6X  | •     | •        | •      |
| 7 - 14  | •     | •        | •      |
| 16 - 20   | •     | •        | •      |
| 7.5 - 20.5 *  | •     | •        | •      |
| S - XL  | *     | •        | •      |
| Cotton and Polyester blend fabric.<br>Machine Washable. |       |          |        |

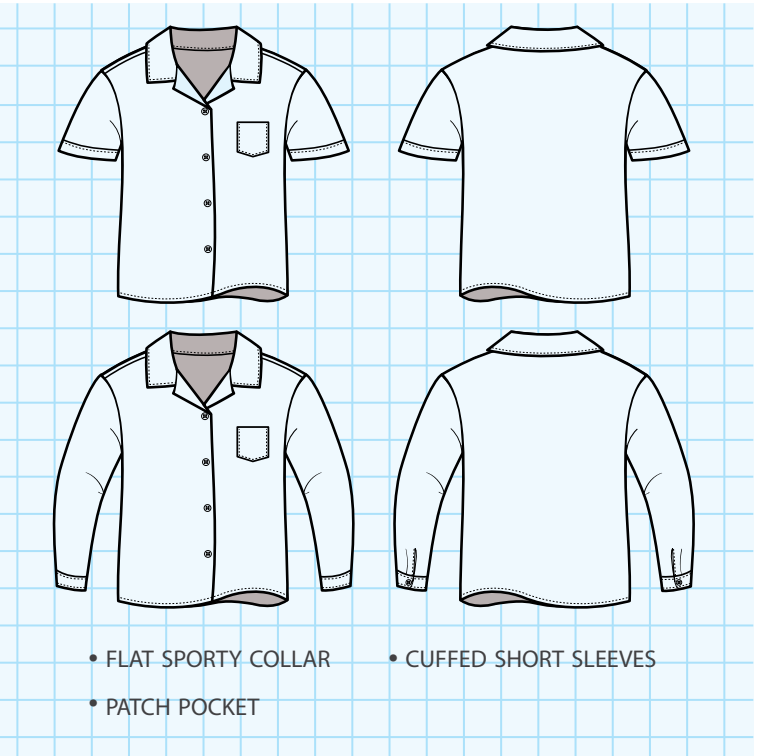
\* While supplies last.

## POINTED COLLAR BLOUSE

LONG SLEEVE

| U585  |       | *        | *      |
|---|-------|----------|--------|
|   | White | Lt. Blue | Yellow |
| 4 - 6X  | •     | •        | •      |
| 7 - 14  | •     | •        | •      |
| 16 - 20   | •     | •        | •      |
| 7.5 - 20.5 *  | •     | •        | •      |
| S - XL  | •     |          |        |
| Cotton and Polyester blend fabric.<br>Machine Washable. |       |          |        |

\* While supplies last.





Cardigan  
girl's all time favorite knitwear

crew neck  
cardigan sweater  
[ U8822 ]

cardigan with  
white trim  
[ U8823 ]

# warmth and comfort

Our cardigan is a perfect addition to just about any outfit. Pair this cardigan with your daily wear for warmth and comfort.

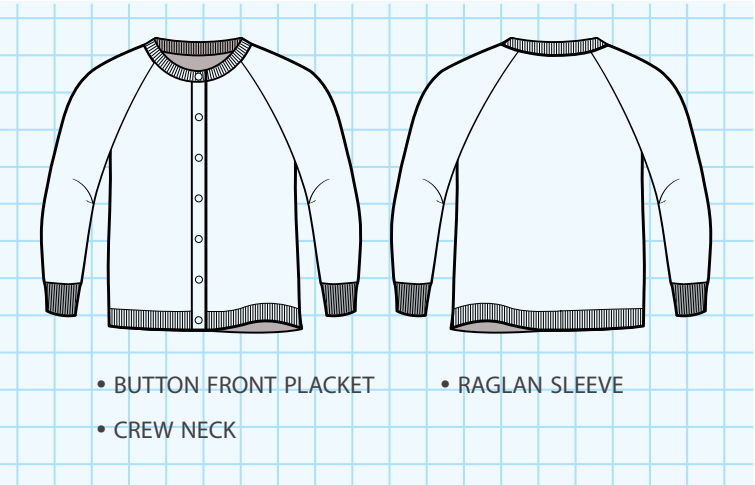
## CREW NECK CARDIGAN

**U8822**  
[ YOUTH ]

Navy

|             |   |
|-------------|---|
| YXS (7)     | • |
| YS (7/8)    | • |
| YM (10/12)  | • |
| YL (14/16)  | • |
| YXL (18/20) | • |

100% Acrylic fabric.  
Machine Washable.



## V-NECK CARDIGAN WITH DECORATIVE WHITE TRIM ON PLACKET

**U8823**  
[ YOUTH ]

White trim

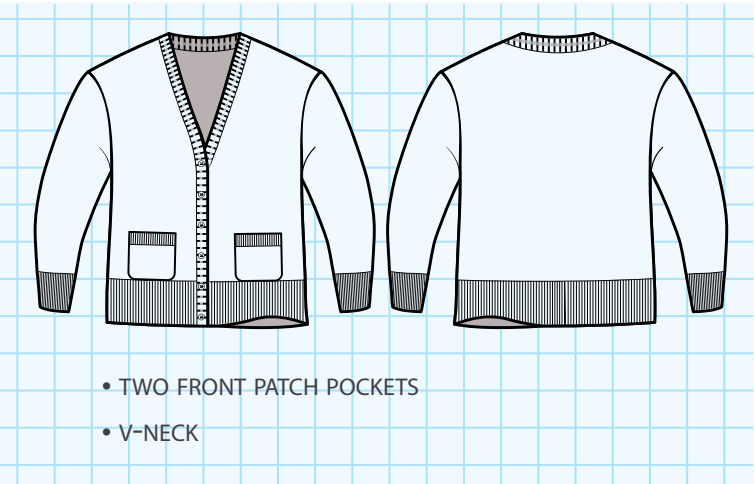
Navy

White trim

Burgundy

|             |   |   |
|-------------|---|---|
| YXS (7)     | • | • |
| YS (7/8)    | • | • |
| YM (10/12)  | • | • |
| YL (14/16)  | • | • |
| YXL (18/20) | • | • |

100% Acrylic fabric.  
Machine Washable.



A group of four children, two girls and two boys, are posed against a light-colored wall with small dark specks. They are all wearing school uniforms consisting of white shirts and dark jackets. The two girls in the back are wearing dark blue jackets, while the two boys in the front are wearing dark blue jackets with grey lining. The boy on the right is also wearing a dark blue beanie. The text 'For the Cold Weather' is written in a blue serif font in the top right corner.

# For the Cold Weather

Keep boys and girls  
warm inside and outside  
the classroom with our  
Cold Weather  
unisex options

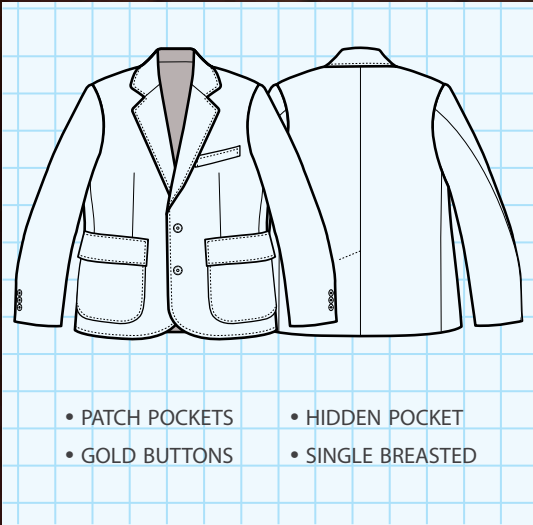
BOYS AND GIRLS

# sharp and smart

Polish the school look with our blazer! This 100% Polyester single breasted blazer will sharpen any look with it's clean lines, patch pockets, and gold buttons.

## BLAZER WITH GOLD BUTTONS

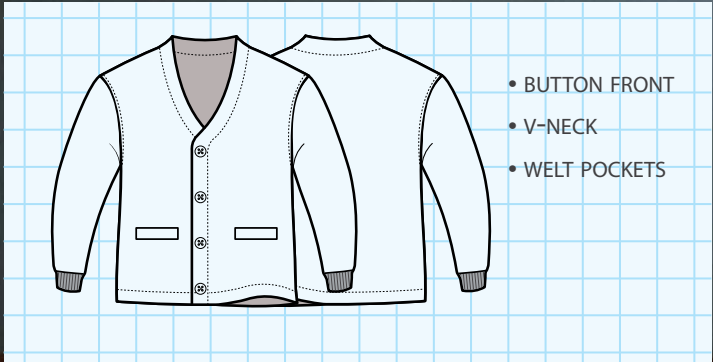
|  |   |                                   |
|--|---|-----------------------------------|
| U8837                                    | <div><div></div><div>Navy</div></div> <div><div></div><div>Burgundy</div></div> |                                   |
|  | 4 - 7   | <div><div></div><div></div></div> |
|  | 8 - 14  | <div><div></div><div></div></div> |
|  | 16 - 20   | <div><div></div><div></div></div> |
|  | 34 - 60 [ MEN'S ]   | <div><div></div><div></div></div> |
| 100% Polyester fabric. Machine Washable. |   |                                   |



BOYS AND GIRLS

# warm and simple

Boys and girls love our V-Neck Cardigans. Perfect for those chilly and breezy days.



## V-NECK CARDIGAN

|  |                |             |             |             |             |
|--|----------------|-------------|-------------|-------------|-------------|
| U8820<br>[ KIDS ]                      | <div></div>    | <div></div> | <div></div> | <div></div> | <div></div> |
|  | Navy           | H. Green    | Burgundy    | Black       | Red         |
|  | S ( 4T / 4 )   |             |             |             |             |
|  | M ( 5 / 6 )    |             |             |             |             |
| L ( 6X / 7 )                           |                |             |             |             |             |
| U8821<br>[ YOUTH ]                     | <div></div>    | <div></div> | <div></div> | <div></div> | <div></div> |
|  | Navy           | H. Green    | Burgundy    | Black       | Red         |
|  | YS ( 7 / 8 )   |             |             |             |             |
|  | YM ( 10 / 12 ) |             |             |             |             |
|  | YL ( 14 / 16 ) |             |             |             |             |
| YXL ( 18 / 20 )                        |                |             |             |             |             |
| U8824<br>[ ADULTS ]                    | <div></div>    | <div></div> | <div></div> | <div></div> |             |
|  | Navy           | H. Green    | Burgundy    | Black       |             |
|  | S              |             |             |             |             |
|  | M              |             |             |             |             |
| L                                      |                |             |             |             |             |
| XL                                     |                |             |             |             |             |
| 100% Acrylic fabric. Machine Washable. |                |             |             |             |             |



v-neck vest  
[ U8832 ]

v-neck sweater  
[ U8835 ]

BOYS AND GIRLS

casual classic

These classic pullover V-Neck sweaters and vest are designed to fit nice and comfortably. They are a perfect addition to any student’s wardrobe.

V-NECK VEST

|                   |                 |                     |                     |                  |
|-------------------|-----------------|---------------------|---------------------|------------------|
| U8832<br>[ KIDS ] | <div>Navy</div> | <div>H. Green</div> | <div>Burgundy</div> | <div>Black</div> |
|-------------------|-----------------|---------------------|---------------------|------------------|

|              |   |   |   |   |
|--------------|---|---|---|---|
| S ( 4T / 4 ) | • | • | • | • |
| M ( 5 / 6 )  | • | • | • | • |
| L ( 6X / 7 ) | • | • | • | • |

|                    |                 |                     |                     |                  |
|--------------------|-----------------|---------------------|---------------------|------------------|
| U8833<br>[ YOUTH ] | <div>Navy</div> | <div>H. Green</div> | <div>Burgundy</div> | <div>Black</div> |
|--------------------|-----------------|---------------------|---------------------|------------------|

|                 |   |   |   |   |
|-----------------|---|---|---|---|
| YS ( 7 / 8 )    | • | • | • | • |
| YM ( 10 / 12 )  | • | • | • | • |
| YL ( 14 / 16 )  | • | • | • | • |
| YXL ( 18 / 20 ) | • | • | • | • |

|                     |                 |                     |                     |                  |
|---------------------|-----------------|---------------------|---------------------|------------------|
| U8834<br>[ ADULTS ] | <div>Navy</div> | <div>H. Green</div> | <div>Burgundy</div> | <div>Black</div> |
|---------------------|-----------------|---------------------|---------------------|------------------|

|     |   |   |   |   |
|-----|---|---|---|---|
| S   | • | • | • | • |
| M   | • | • | • | • |
| L   | • | • | • | • |
| XL  | • | • | • | • |
| 2XL | • | • | • | • |

100% Acrylic fabric. Machine Washable.

V-NECK SWEATER

|                   |                 |                     |                     |                  |
|-------------------|-----------------|---------------------|---------------------|------------------|
| U8835<br>[ KIDS ] | <div>Navy</div> | <div>H. Green</div> | <div>Burgundy</div> | <div>Red *</div> |
|-------------------|-----------------|---------------------|---------------------|------------------|

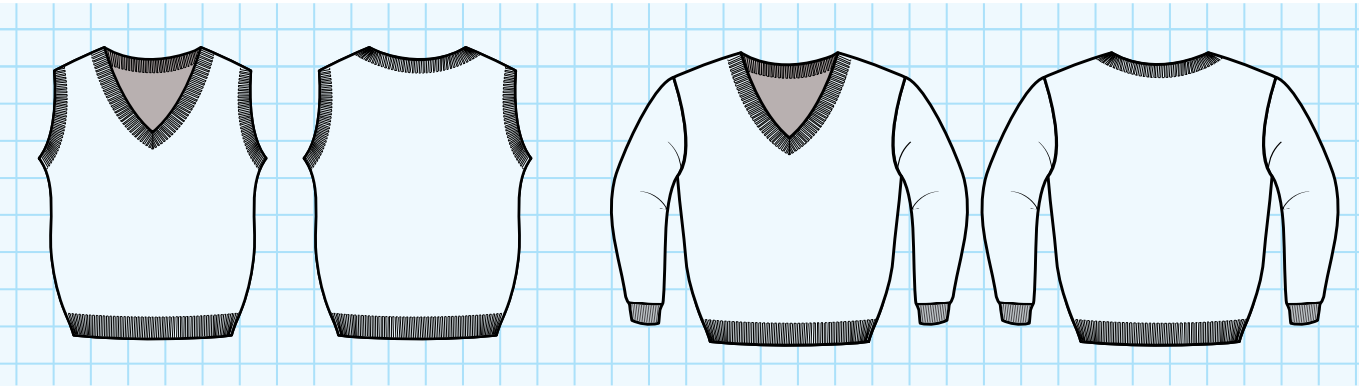
|              |   |   |   |   |
|--------------|---|---|---|---|
| S ( 4T / 4 ) | • | • | • | • |
| M ( 5 / 6 )  | • | • | • | • |
| L ( 6X / 7 ) | • | • | • | • |

|                    |                 |                     |                     |                  |
|--------------------|-----------------|---------------------|---------------------|------------------|
| U8836<br>[ YOUTH ] | <div>Navy</div> | <div>H. Green</div> | <div>Burgundy</div> | <div>Red *</div> |
|--------------------|-----------------|---------------------|---------------------|------------------|

|                 |   |   |   |   |
|-----------------|---|---|---|---|
| YS ( 7 / 8 )    | • | • | • | • |
| YM ( 10 / 12 )  | • | • | • | • |
| YL ( 14 / 16 )  | • | • | • | • |
| YXL ( 18 / 20 ) | • | • | • | • |

100% Acrylic fabric. Machine Washable.

\* While supplies last.



perfect for the cold weather

Furnished with a hood, front kangaroo pockets and full front zipper. The soft touch lining will keep students warm and the nylon ripstop shell is easy to clean.

RIPSTOP NYLON JACKET WITH HOOD

|                   |                 |                     |                     |  |
|-------------------|-----------------|---------------------|---------------------|--|
| U8825<br>[ KIDS ] | <div>Navy</div> | <div>H. Green</div> | <div>Burgundy</div> |  |
| S ( 4T / 4 )      | •               | •                   | •                   |  |
| M ( 5 / 6 )       | •               | •                   | •                   |  |
| L ( 6X / 7 )      | •               | •                   | •                   |  |

|                    |                 |                     |                     |                  |
|--------------------|-----------------|---------------------|---------------------|------------------|
| U8827<br>[ YOUTH ] | <div>Navy</div> | <div>H. Green</div> | <div>Burgundy</div> | <div>Black</div> |
| YXS ( 7 )          | •               |                     |                     |                  |
| YS ( 7 / 8 )       | •               | •                   | •                   | •                |
| YM ( 10 / 12 )     | •               | •                   | •                   | •                |
| YL ( 14 / 16 )     | •               | •                   | •                   | •                |
| YXL ( 18 / 20 )    | •               | •                   | •                   | •                |

|                     |                 |                     |                     |                  |
|---------------------|-----------------|---------------------|---------------------|------------------|
| U8830<br>[ ADULTS ] | <div>Navy</div> | <div>H. Green</div> | <div>Burgundy</div> | <div>Black</div> |
| S                   | •               | •                   | •                   | •                |
| M                   | •               | •                   | •                   | •                |
| L                   | •               | •                   | •                   | •                |
| XL                  | •               | •                   | •                   | •                |
| 2XL                 | •               | •                   | •                   | •                |

Shell: Nylon Lining: Polyester  
Machine Washable.



on-the-go everyday jacket

This hoodless jacket is just what you are looking for! It is warm, comfortable, and has a great look. Standard collar with two front pockets and a full front zip closure.

HOODLESS RIPSTOP NYLON JACKET

|                        |                 |                     |                     |                  |
|------------------------|-----------------|---------------------|---------------------|------------------|
| U8864*<br>[ TODDLERS ] | <div>Navy</div> | <div>H. Green</div> | <div>Burgundy</div> | <div>Black</div> |
| 2T - 4T                | •               | •                   | •                   | •                |

|                   |                 |                     |                     |                  |
|-------------------|-----------------|---------------------|---------------------|------------------|
| U8866<br>[ KIDS ] | <div>Navy</div> | <div>H. Green</div> | <div>Burgundy</div> | <div>Black</div> |
| S ( 4T / 4 )      | •               | •                   | •                   | •                |
| M ( 5 / 6 )       | •               | •                   | •                   | •                |
| L ( 6X / 7 )      | •               | •                   | •                   | •                |

|                    |                 |                     |                     |                  |
|--------------------|-----------------|---------------------|---------------------|------------------|
| U8867<br>[ YOUTH ] | <div>Navy</div> | <div>H. Green</div> | <div>Burgundy</div> | <div>Black</div> |
| YXS ( 7 )          | •               | •                   | •                   | •                |
| YS ( 7 / 8 )       | •               | •                   | •                   | •                |
| YM ( 10 / 12 )     | •               | •                   | •                   | •                |
| YL ( 14 / 16 )     | •               | •                   | •                   | •                |
| YXL ( 18 / 20 )    | •               | •                   | •                   | •                |

|                     |                 |                     |                     |                  |
|---------------------|-----------------|---------------------|---------------------|------------------|
| U8868<br>[ ADULTS ] | <div>Navy</div> | <div>H. Green</div> | <div>Burgundy</div> | <div>Black</div> |
| S                   | •               | •                   | •                   | •                |
| M                   | •               | •                   | •                   | •                |
| L                   | •               | •                   | •                   | •                |
| XL                  | •               | •                   | •                   | •                |
| 2XL                 | •               | •                   | •                   | •                |

Shell: Nylon Lining: Polyester  
Machine Washable.

\* While supplies last.



# a favorite active jacket

These hoodies are guaranteed to keep the cold out with its warm fleece inside. Equipped with two front kangaroo pockets, hood, full zipper, and two layers of fabric. Pair this with any of your favorite school outfit.

## HOODED JACKET WITH KANGAROO POCKET

U8897  
[ KIDS ]

Navy

|              |   |
|--------------|---|
| S ( 4T / 4 ) | • |
| M ( 5 / 6 )  | • |
| L ( 6X / 7 ) | • |

U8898  
[ YOUTH ]

Navy

|                 |   |
|-----------------|---|
| YXS ( 7 )       | • |
| YS ( 7 / 8 )    | • |
| YM ( 10 / 12 )  | • |
| YL ( 14 / 16 )  | • |
| YXL ( 18 / 20 ) | • |

U8891  
[ ADULTS ]

Navy

H. Grey

Red

|     |   |   |   |
|-----|---|---|---|
| S   |   | • | • |
| M   | • | • | • |
| L   | • | • | • |
| XL  | • | • | • |
| 2XL | • | • | • |

Cotton and Polyester blend fabric.  
Machine Washable.



- HOODED WITH RIB TRIM
- KANGAROO POCKETS
- FULL ZIPPER

# another level of warmth and comfort

This anti-pill fleece jacket is very soft and warm. The double layer collar and elastic waist will surely keep the cold out. Equipped with two side pockets.

## POLAR FLEECE FULL ZIP JACKET

U8884  
[ KIDS ]

Navy

H. Green

Burgundy

Black

|              |   |   |   |   |
|--------------|---|---|---|---|
| S ( 4T / 4 ) | • | • | • | • |
| M ( 5 / 6 )  | • | • | • | • |
| L ( 6X / 7 ) | • | • | • | • |

U8885  
[ YOUTH ]

Navy

H. Green

Burgundy

Black

|                 |   |   |   |   |
|-----------------|---|---|---|---|
| YXS ( 7 )       | • | • | • | • |
| YS ( 7 / 8 )    | • | • | • | • |
| YM ( 10 / 12 )  | • | • | • | • |
| YL ( 14 / 16 )  | • | • | • | • |
| YXL ( 18 / 20 ) | • | • | • | • |

U8886  
[ ADULTS ]

Navy

H. Green

Burgundy

Black

|     |   |   |   |   |
|-----|---|---|---|---|
| S   | • | • | • | • |
| M   | • | • | • | • |
| L   | • | • | • | • |
| XL  | • | • | • | • |
| 2XL | • | • | • | • |

100% Polyester fabric.  
Machine Washable.



- FLEECE
- ELASTIC WAIST
- SIDE WELT POCKETS
- FULL ZIPPER



ADJUSTABLE NECKTIE

|                                     |                 |                     |                     |                  |                |                  |                  |
|-------------------------------------|-----------------|---------------------|---------------------|------------------|----------------|------------------|------------------|
| *U318                               | <div>Navy</div> | <div>H. Green</div> | <div>Burgundy</div> | <div>Black</div> | <div>Red</div> | <div>Brown</div> | <div>Khaki</div> |
| 4 - 7                               | •               | •                   | •                   | •                | •              | •                | •                |
| 8 - 14                              | •               | •                   | •                   | •                | •              | •                | •                |
| Polyester fabric. Machine Washable. |                 |                     |                     |                  |                |                  |                  |
| * Please call for availability      |                 |                     |                     |                  |                |                  |                  |

- Hook closure
- Easy to put on
- Adjustable for best fit

CROSS TIE

|                                     |                 |                     |                     |                  |                |                 |
|-------------------------------------|-----------------|---------------------|---------------------|------------------|----------------|-----------------|
| * U303                              | <div>Navy</div> | <div>H. Green</div> | <div>Burgundy</div> | <div>Black</div> | <div>Red</div> | <div>Grey</div> |
| ONE SIZE FITS ALL                   | •               | •                   | •                   | •                | •              | •               |
| Polyester fabric. Machine Washable. |                 |                     |                     |                  |                |                 |
| * Please call for availability      |                 |                     |                     |                  |                |                 |

- Easy to put on
- Front snap button
- Adjustable for best fit

HAIR SCRUNCHIE

|                                     |                 |                     |                     |                  |                |
|-------------------------------------|-----------------|---------------------|---------------------|------------------|----------------|
| * U312                              | <div>Navy</div> | <div>H. Green</div> | <div>Burgundy</div> | <div>Black</div> | <div>Red</div> |
| ONE SIZE FITS ALL                   | •               | •                   | •                   | •                | •              |
| Polyester fabric. Machine Washable. |                 |                     |                     |                  |                |
| * While supplies last               |                 |                     |                     |                  |                |

HEADBAND

|                                     |                     |                  |                |
|-------------------------------------|---------------------|------------------|----------------|
| * U313                              | <div>Burgundy</div> | <div>Black</div> | <div>Red</div> |
| ONE SIZE FITS ALL                   | •                   | •                | •              |
| Polyester fabric. Machine Washable. |                     |                  |                |
| * While supplies last               |                     |                  |                |

**UNIVERSAL**  
SCHOOL UNIFORM

Quality you can trust  
since 1984

